

Dining Room Design Challenge for Amy Troute!

Presented by Heritage School of Interior Design

Project Brief

Amy Troute is in need of a dining room makeover! Heritage students and alumni are invited to design a space that meets all of Amy Troute's specifications and includes all must-have products.

Final submissions must include a minimum of:

- 1 concept board
- 1 floorplan
- At least 1 elevation or perspective drawing (can be done in Photoshop, Illustrator, CAD or Hand Rendered)
- A Product Schedule including the vendor and pricing information

Budget: \$15,000 (not including shipping, delivery or installation)

Submit your design by posting the photos on social media and tagging @heritageschoolofinteriordesign and @amytroutedesign. You may also email submissions to amy@heritageschoolofinteriordesign.com.

Please review the detailed step-by-step project instructions starting on Page 2.

Judging & Incentive

Our panel of judges will review all entries, and Amy Troute will select the final winner based off of the following criteria:

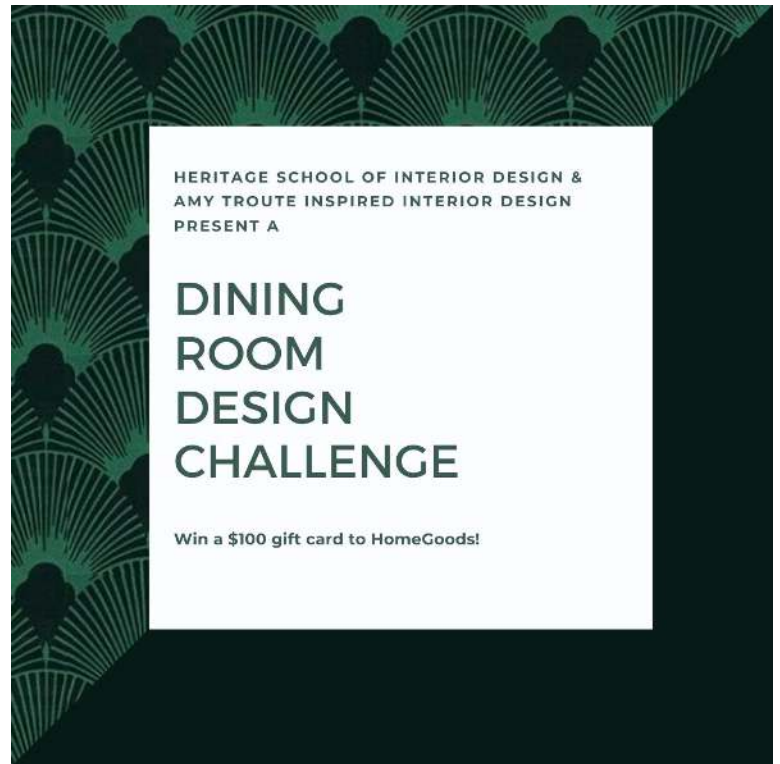
- All required materials were submitted
- Design meets project brief and Amy's requests
- Design creatively incorporates all client must-have products

The winner will receive a \$100 gift card to HomeGoods!

Project Timeline

- Design Challenge opens Tuesday, May 26th
- Submissions will close at midnight on Friday, June 5th.
- The winner will be selected and announced on social media on Tuesday, June 9th.

STEP 1: Review Project Details



Below are some important details to consider. Please review dining room photos on page 4.

- Amy mostly uses her dining room when company is over and for special occasions.
- The style of the home is Transitional.
- The hardwood throughout the home has an orange undertone but will likely change to a warm chestnut brown with future potential kitchen renovations.
- Most of the metal tones throughout her home are brushed nickel and pewter.
- The current paint color throughout is SW 7567 Natural Tan.
- The dining window is East facing with a neighboring home close by so the room gets little natural light. The selected chandelier must be dimmable and provide ample light for the space. Try to avoid exposed lightbulbs.
- Amy would love to see deep jewel tones and warm wood tones incorporated into the dining space.
- **Budget:** \$15,000 (not including shipping, delivery or installation)

STEP 2: Review the Floorplan

Refer to the floorplan on page 5. This will be your space to design within and help guide your product selections. All product selections must fit within the given space. *Note: You can not make any structural changes to the space.*

STEP 3: Create a Concept Board & Source Your Products

Create a concept board to represent your color scheme and the overall look and feel of your design. Then source all of the following must-have products.

Amy's Must-Haves:

- Area rug (durable, low pile)
- Round table (to seat 6 people)
- Seating for 6 people
- Credenza with ample storage
- Lamp(s) on Credenza
- Chandelier (must provide ample light, be dimmable and preferably no exposed light bulbs)
- Art, accessories
- No changes to be made to the wine fridge area

Optional:

- Wallpaper or dimensional wall detail
- Round dining table with leaf extension

Some of Amy's preferred vendors include:

- | | | | | |
|----------------|-------------------------|-------------|----------------|----------|
| - Leftbank Art | - Moe's Home Collection | - Arteriors | - Classic Home | - Jaipur |
| - Fourhands | - Comfort Design | - Bernhardt | - Curry & Co | - Jaunty |
| - Lolio | - Lexington | | | |

STEP 4: Present Your Design

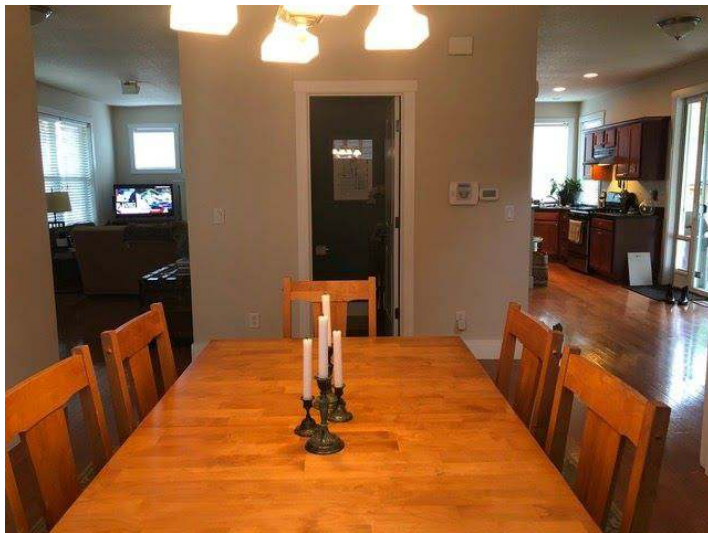
Submit your design by posting it on social media! Final design submissions to the competition should include a minimum of:

- 1 concept board that represents your color scheme and the overall look and feel of your design
- 1 floorplan using the provided room dimensions and including all product selections to scale
- At least 1 elevation or perspective drawing (can be done in Photoshop, Illustrator, CAD or Hand Rendered)
- A Product Schedule including vendor and pricing information.

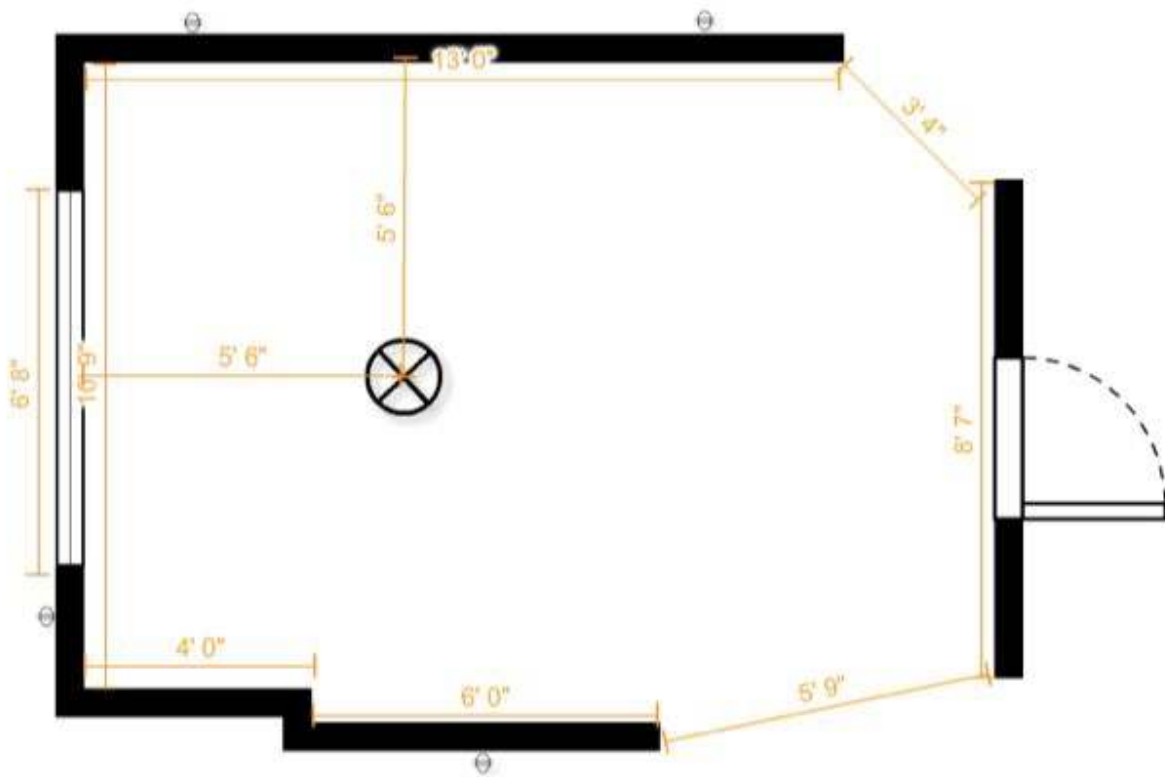
When posting your design on social media, please tag @heritageschoolofinteriordesign and @amytroutedesign.

You can also email submissions to amy@heritageschoolofinteriordesign.com.

Before Photos



Dining Room Floorplan



Additional Notes:

- 9' ceilings
- Window is 35" tall x 6'8" wide and 62" off the floor – no window treatment is necessary