



LEANNE WEST
DESIGNS

ABOUT ME



Raised in Fresno, California, Leanne relocated to San Francisco to pursue a Marketing degree from San Francisco State University and landed her first corporate retail job shortly after. She spent four years conceptualizing apparel placement for Old Navy Inc., followed by three years of space planning for all direct to consumer stores at adidas. Leanne is currently pursuing a master's certification of Interior Design from Heritage School of Interior Design in Portland, Oregon. She believes that there is no task too large or too small to create her client's dream atmosphere. With a well-trained eye in muted color and pattern mixing, she believes in creating polished and timeless spaces. Her aesthetic is serene, comfortable, and above all else, inviting.

Leanne currently resides in Portland, Oregon with her husband, Casey and doggo, Barber.

TABLE OF CONTENTS

01 *THE GLENDALE HOUSE
RESIDENTIAL DESIGN*

03 *A BENICIA BUNGALOW
KITCHEN + BATH DESIGN*

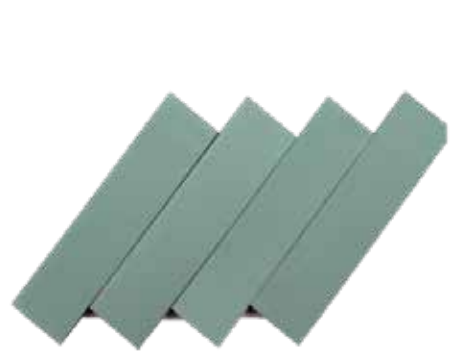
02 *TWO RIVERS HOTEL
COMMERCIAL DESIGN*

04 *HOME STAGING
MY APARTMENT*

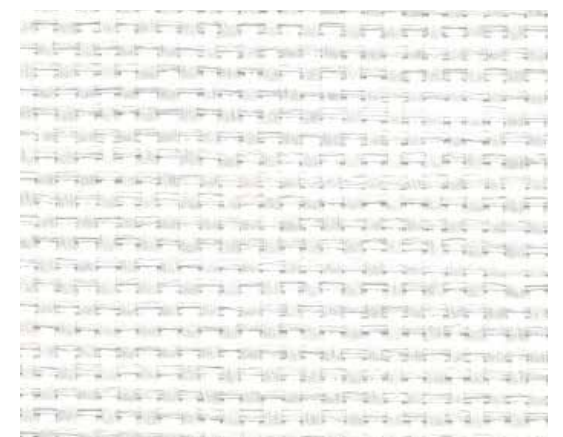
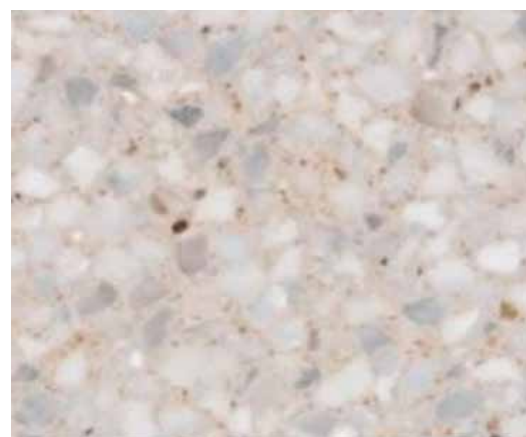
THE GLENDALE HOUSE

RESIDENTIAL

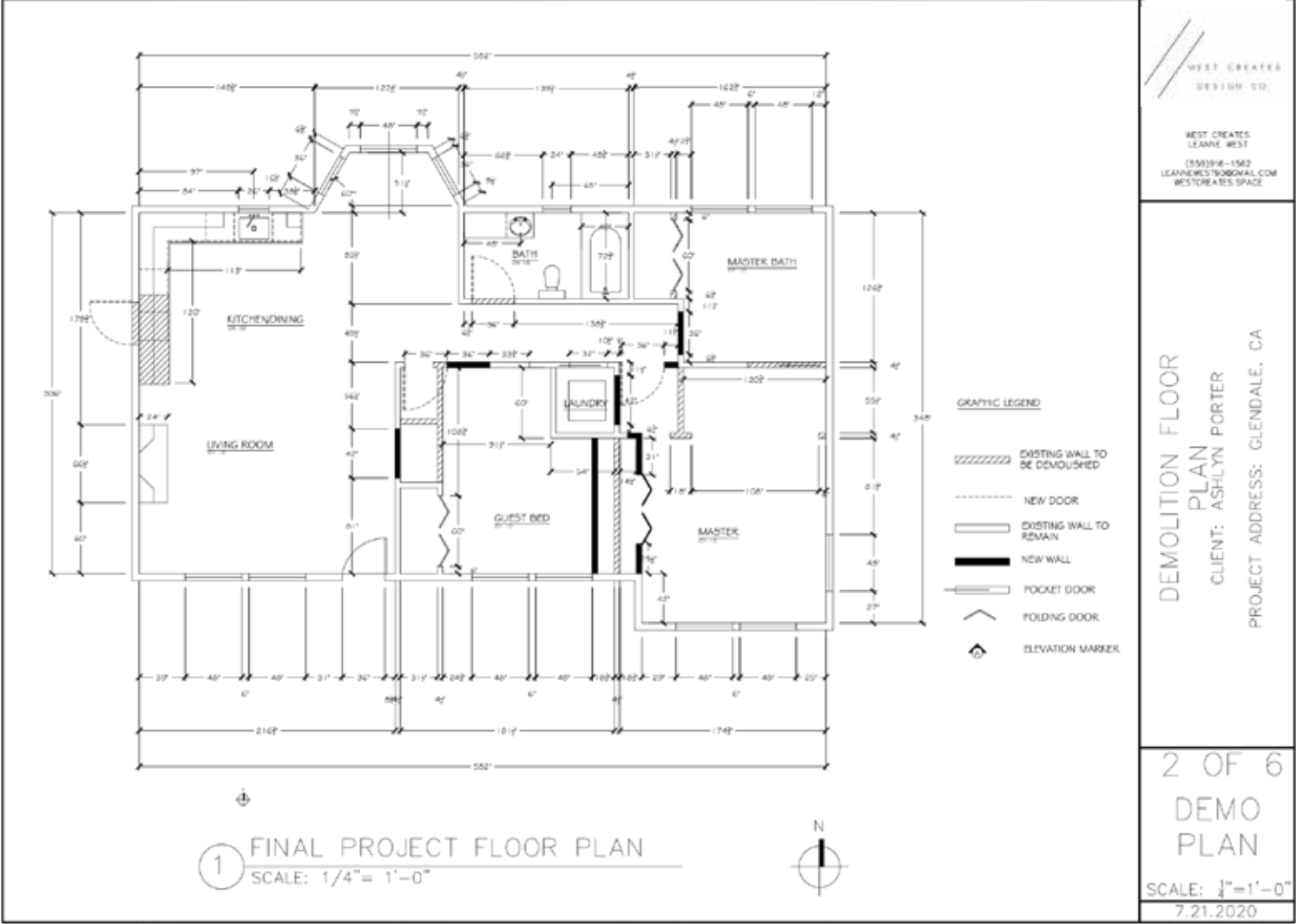
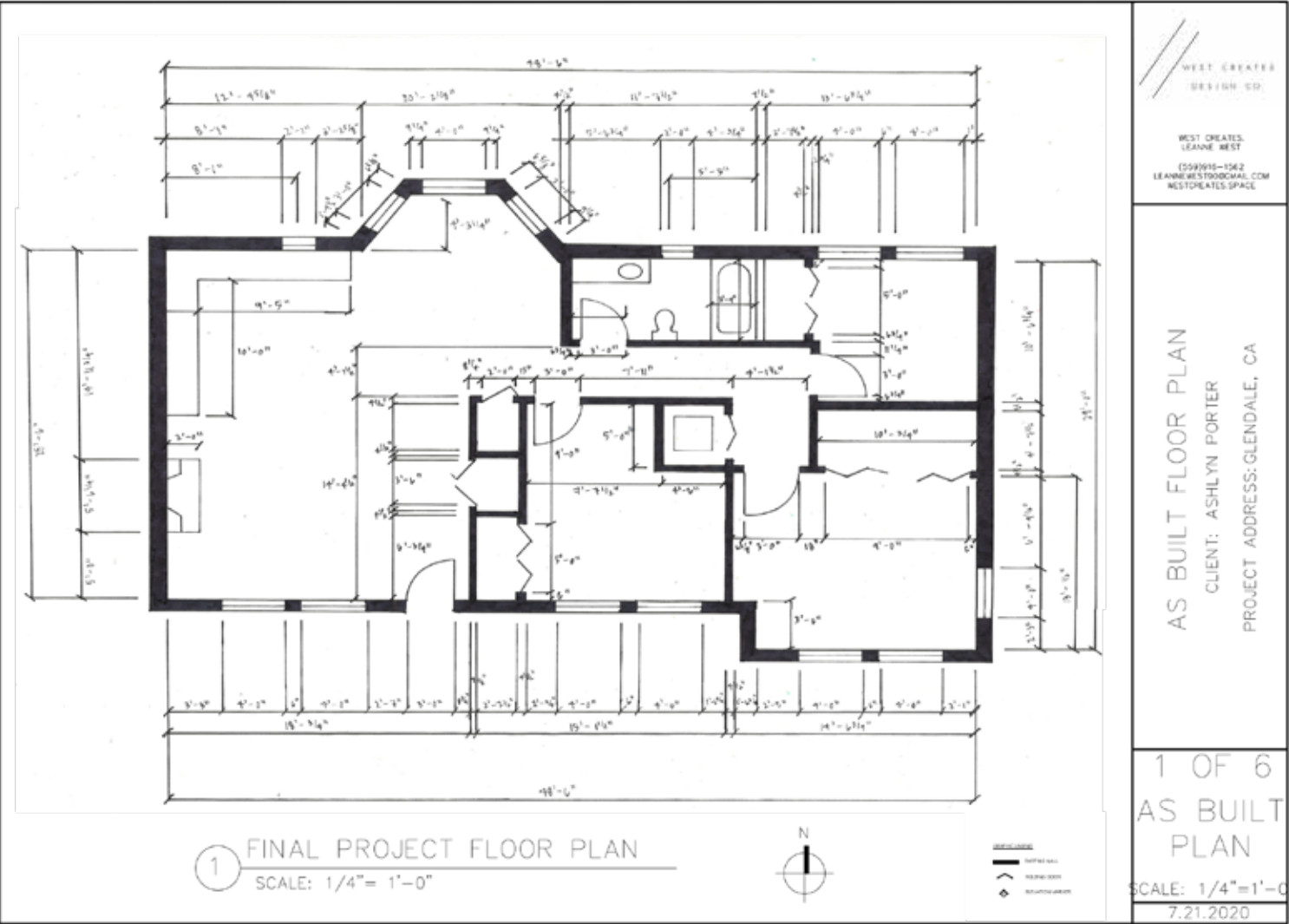
THE BRIEF: Our client bought their first home in Glendale, CA in 2019. They love Spanish-style exteriors and are also influenced by their travels throughout Mexico. We also wanted to highlight our client's young and vibrant personality, so you'll see playful nods throughout the space.



LEANNE WEST
DESIGNS



FLOOR PLANS



WEST CREATES DESIGN CO.
 WEST CREATES
 LEANNE WEST
 (352)916-1562
 LEANNE@WEST90BOMAIL.COM
 WESTCREATES.SPACE

FURNITURE KEY

- DC1 - ALFONSO MARINA BAHL CHAIR
- DT1 - HAVEN TABLE
- B1 - CUSTOM CONCRETE BENCH
- QB1 - CHS BEDFRAME
- QB2 - BUCKY BED
- AR1 - KUSH RUG
- AR2 - KEYLOCK RUG
- AR3 - SITARA RUG
- AR4 - DEBONAIR RUG
- AR5 - WHISPER RUG
- ARC - TAMARE RUG
- ST2 - BACILO SIDE TABLE
- ST1 - BACILO SIDE TABLE
- V2 - SOLACE VANITY
- V1 - AURI SPA VANITY
- D1 - DAVID DESK
- AC1 - AVA CHAIR
- AC2 - PALOMA CHAIR
- CT1 - PALOMA TABLE
- S1 - CLOUD SOFA
- P1 - PLANT
- W1 - SOLNA CABINET
- N1 - NOAH TABLE
- N2 - SUR TABLE
- BS1 - RODEZ CHAIR

GRAPHIC LEGEND

- NEW DOOR
- EXISTING WALL TO REMAIN
- NEW WALL
- POCKET DOOR
- FOLDING DOOR
- ELEVATION MARKER

1 FINAL PROJECT FLOOR PLAN
 SCALE: 1/4" = 1'-0"

4 OF 6 FURNITURE PLAN
 SCALE: 1/4" = 1'-0"
 7.21.2020

FURNITURE FLOOR PLAN
 CLIENT: ASHLYN PORTER
 PROJECT ADDRESS: GLENDALE, CA

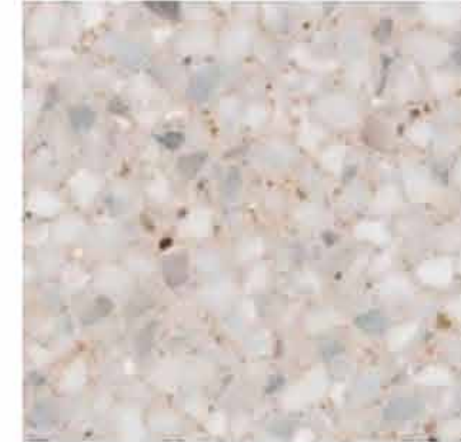
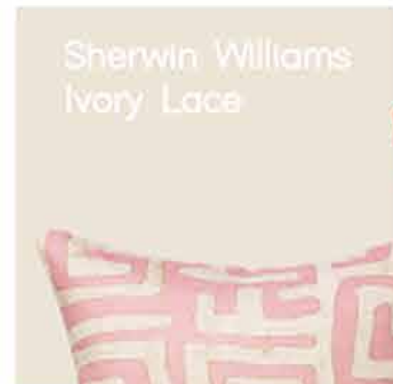
1 FINAL PROJECT FLOOR PLAN
SCALE: 1/4" = 1'-0"

ELECTRICAL FLOOR PLAN
PLAN
CLIENT: ASHLYN PORTER
PROJECT ADDRESS: GLENDALE, CA

ELECTRICAL LEGEND

120V	15A
120V	20A
120V	30A
120V	40A
120V	50A
120V	60A
120V	70A
120V	80A
120V	90A
120V	100A
120V	110A
120V	120A
120V	130A
120V	140A
120V	150A
120V	160A
120V	170A
120V	180A
120V	190A
120V	200A
120V	210A
120V	220A
120V	230A
120V	240A
120V	250A
120V	260A
120V	270A
120V	280A
120V	290A
120V	300A
120V	310A
120V	320A
120V	330A
120V	340A
120V	350A
120V	360A
120V	370A
120V	380A
120V	390A
120V	400A
120V	410A
120V	420A
120V	430A
120V	440A
120V	450A
120V	460A
120V	470A
120V	480A
120V	490A
120V	500A
120V	510A
120V	520A
120V	530A
120V	540A
120V	550A
120V	560A
120V	570A
120V	580A
120V	590A
120V	600A
120V	610A
120V	620A
120V	630A
120V	640A
120V	650A
120V	660A
120V	670A
120V	680A
120V	690A
120V	700A
120V	710A
120V	720A
120V	730A
120V	740A
120V	750A
120V	760A
120V	770A
120V	780A
120V	790A
120V	800A
120V	810A
120V	820A
120V	830A
120V	840A
120V	850A
120V	860A
120V	870A
120V	880A
120V	890A
120V	900A
120V	910A
120V	920A
120V	930A
120V	940A
120V	950A
120V	960A
120V	970A
120V	980A
120V	990A
120V	1000A
120V	1010A
120V	1020A
120V	1030A
120V	1040A
120V	1050A
120V	1060A
120V	1070A
120V	1080A
120V	1090A
120V	1100A
120V	1110A
120V	1120A
120V	1130A
120V	1140A
120V	1150A
120V	1160A
120V	1170A
120V	1180A
120V	1190A
120V	1200A
120V	1210A
120V	1220A
120V	1230A
120V	1240A
120V	1250A
120V	1260A
120V	1270A
120V	1280A
120V	1290A
120V	1300A
120V	1310A
120V	1320A
120V	1330A
120V	1340A
120V	1350A
120V	1360A
120V	1370A
120V	1380A
120V	1390A
120V	1400A
120V	1410A
120V	1420A
120V	1430

LIVING ROOM DESIGN



LEANNE WEST
DESIGNS

THE GLENDALE HOUSE
PHOTOSHOP

LIVING ROOM DESIGN



KITCHEN + DINING

DESIGN



Sherwin Williams
Ivory Lace



LEANNE WEST
DESIGNS

THE GLENDALE HOUSE
PHOTOSHOP

01

KITCHEN + DINING

DESIGN



HALLWAY DESIGN



BATHROOM DESIGN



LEANNE WEST
DESIGNS

THE GLENDALE HOUSE
SKETCHUP

01

TWO RIVERS HOTEL

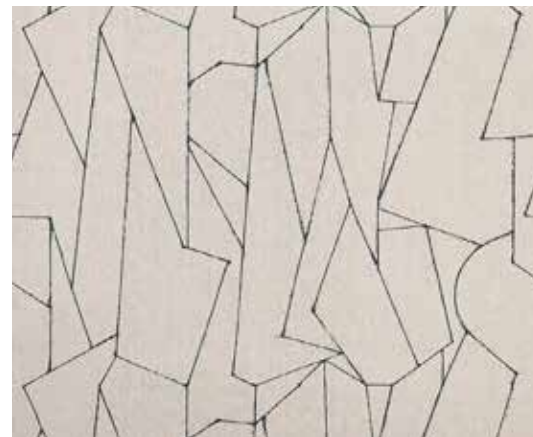
COMMERCIAL

THE BRIEF: Our client purchased his first hotel in Bend, Oregon after successfully creating his own natural wine company in Boise, Idaho. His goal was to create a new layout to host monthly wine club events, with a future goal of hosting some retail seminars.

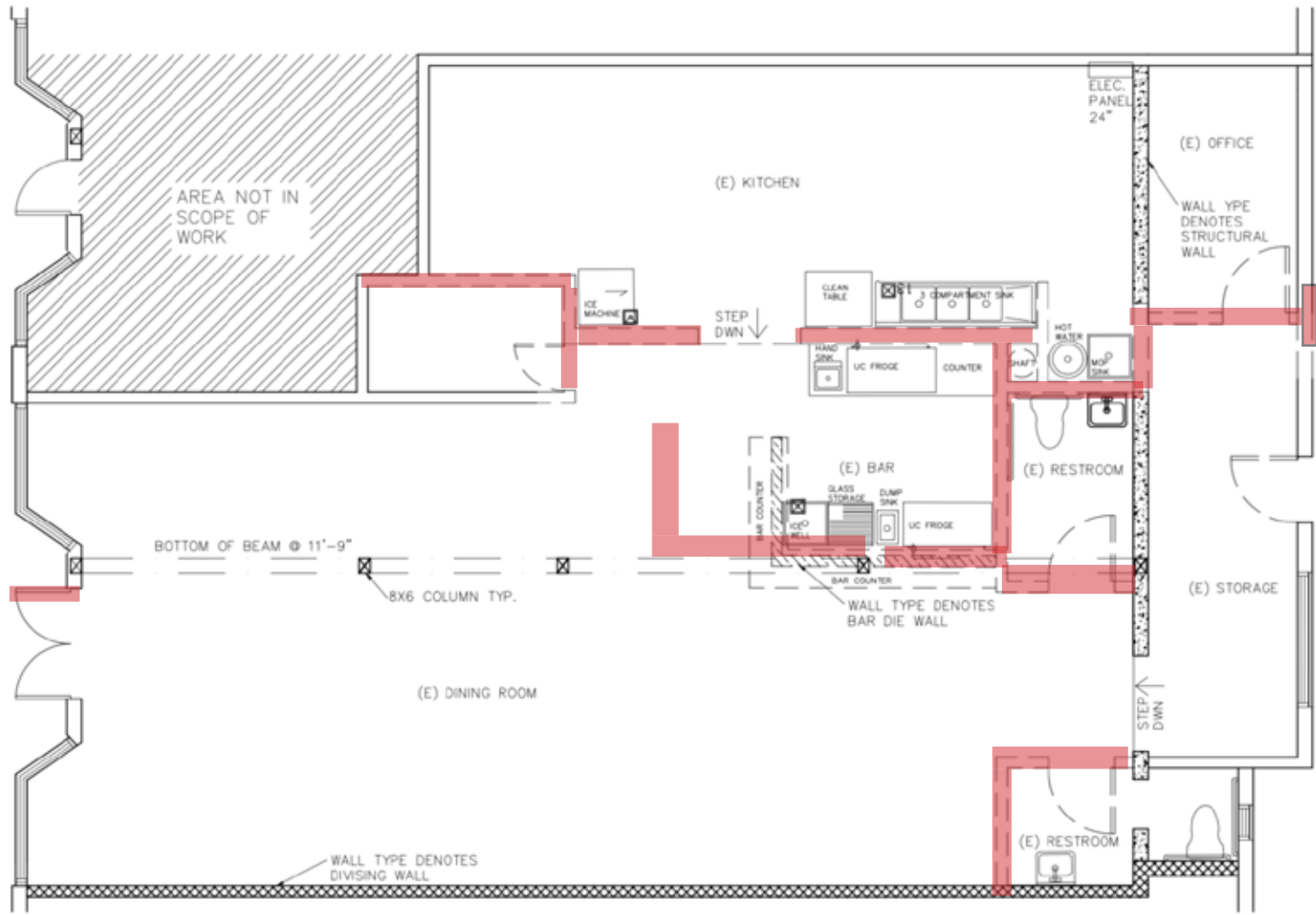
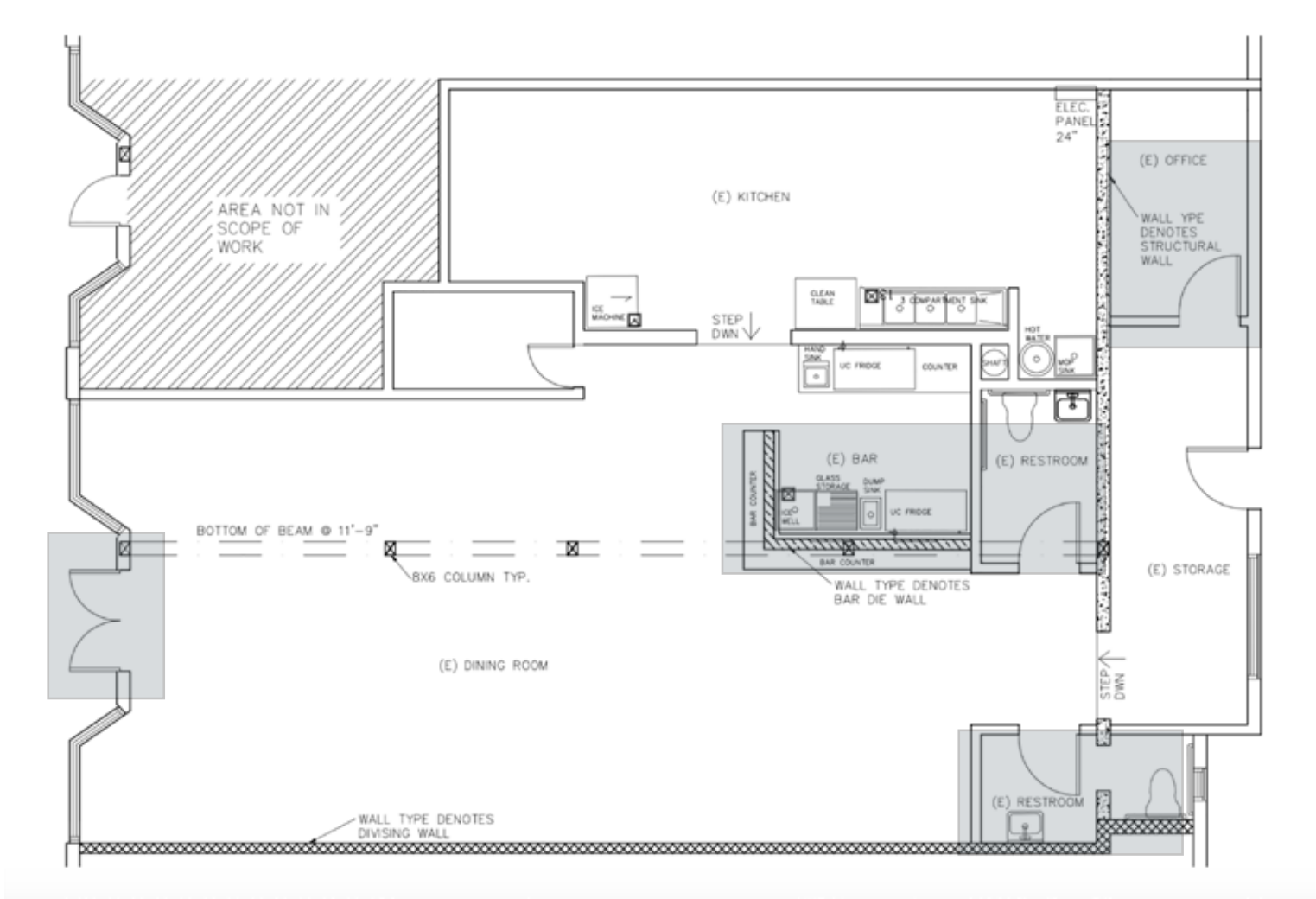


*"OVER THE RIVER AND PAST THE
WOODS, THE PAST RECAPTURED."*

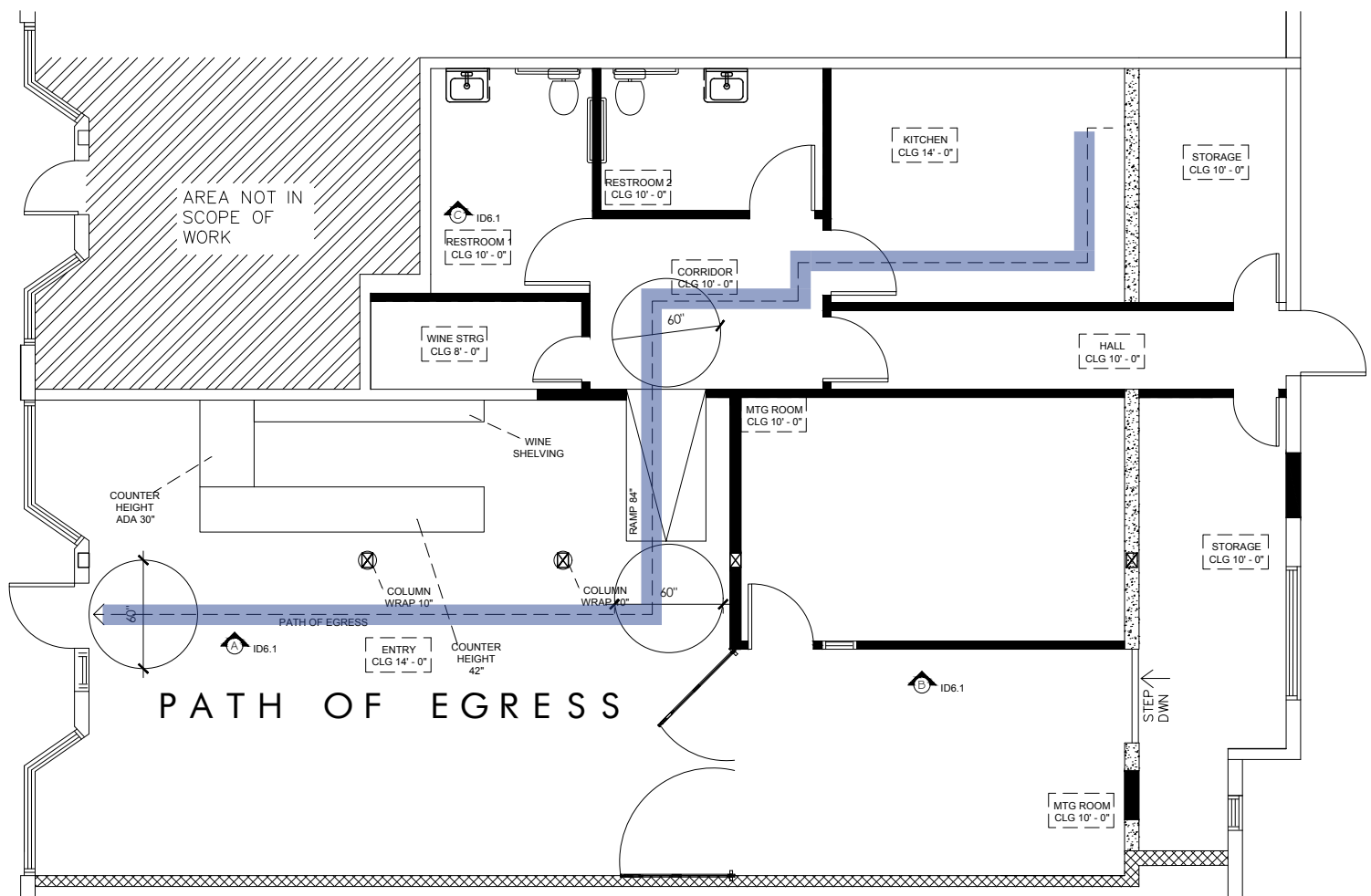
LEANNE WEST
DESIGNS



FLOOR PLANS



FLOOR PLANS



OCCUPANCY INFO

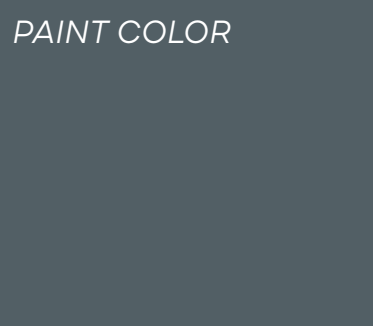
GROUP	A-2
OCCUPANT LOAD	121
MIN EXITS	2
MAX TRAVEL DISTANCE	200
MIN CORRIDOR	44



DWELL SPACE
DESIGN



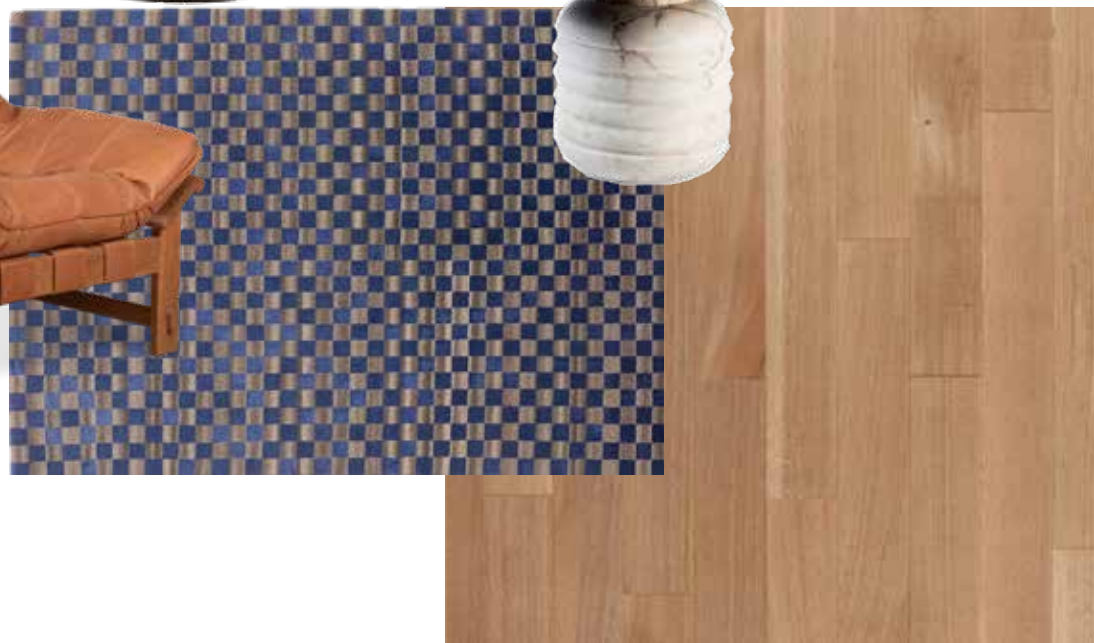
UPHOLSTERY



PAINT COLOR

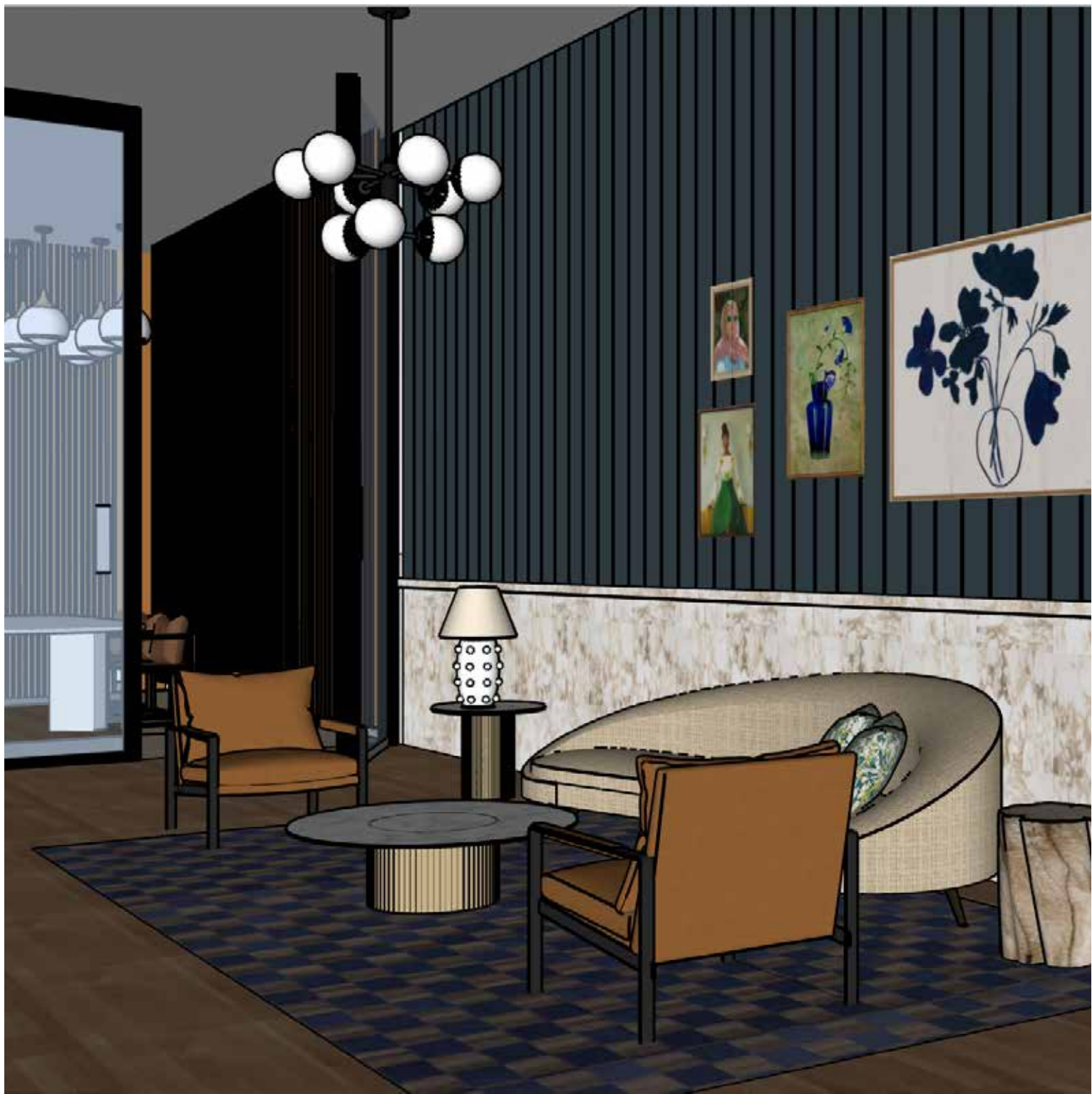


WALL TILE



LEANNE WEST
DESIGNS

TWO RIVERS HOTEL
PHOTOSHOP + SKETCHUP



3D VIEW

RESTROOM DESIGN



LEANNE WEST
DESIGNS

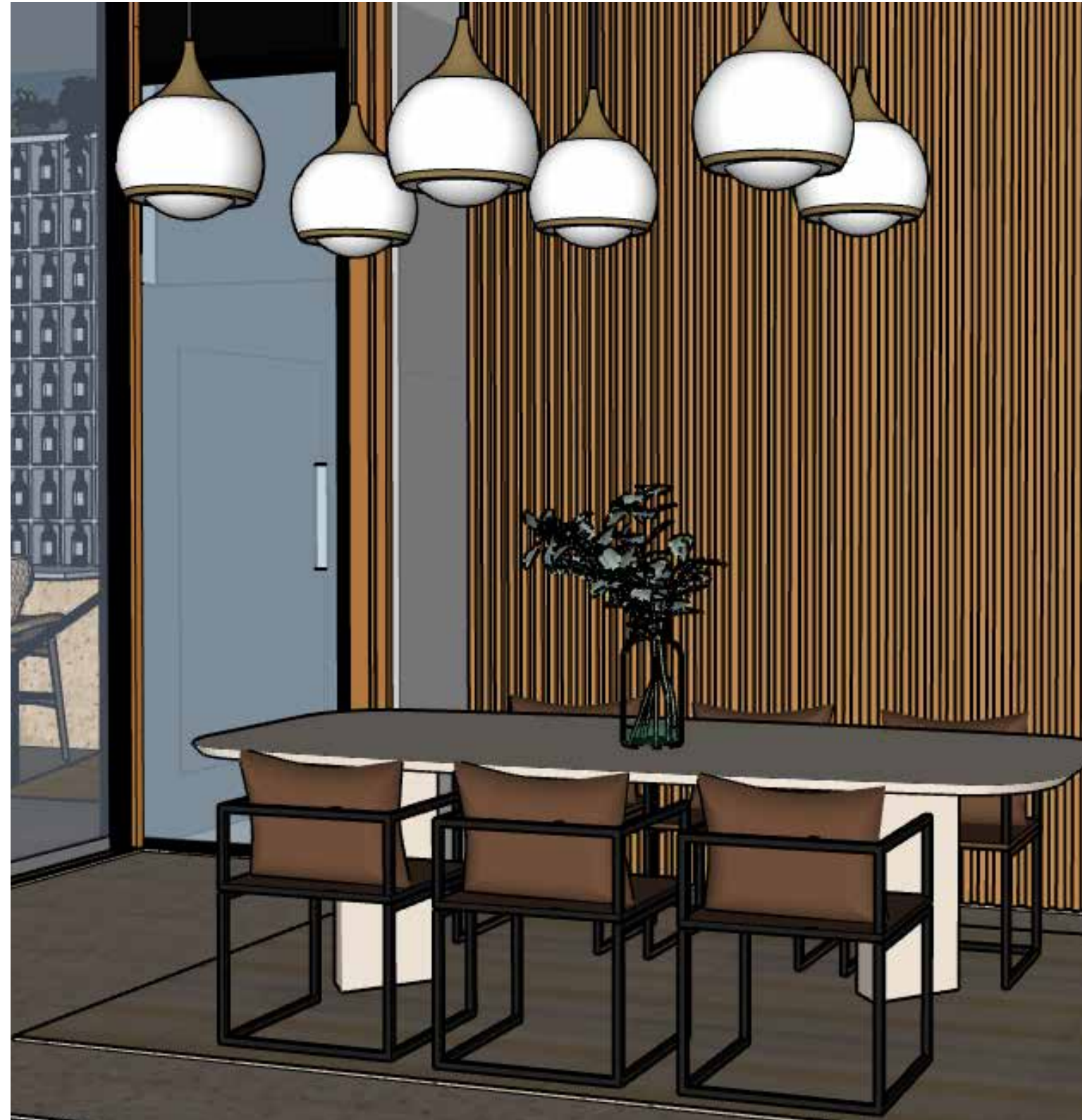
TWO RIVERS HOTEL
PHOTOSHOP + SKETCHUP



ELEVATION VIEW

BOARD ROOM

DESIGN



3D VIEW

MEETING ROOM DESIGN



PAINT COLOR



FLOOR TILE



3D VIEW

A B E N I C I A B U N G A L O W

KITCHEN + BATH

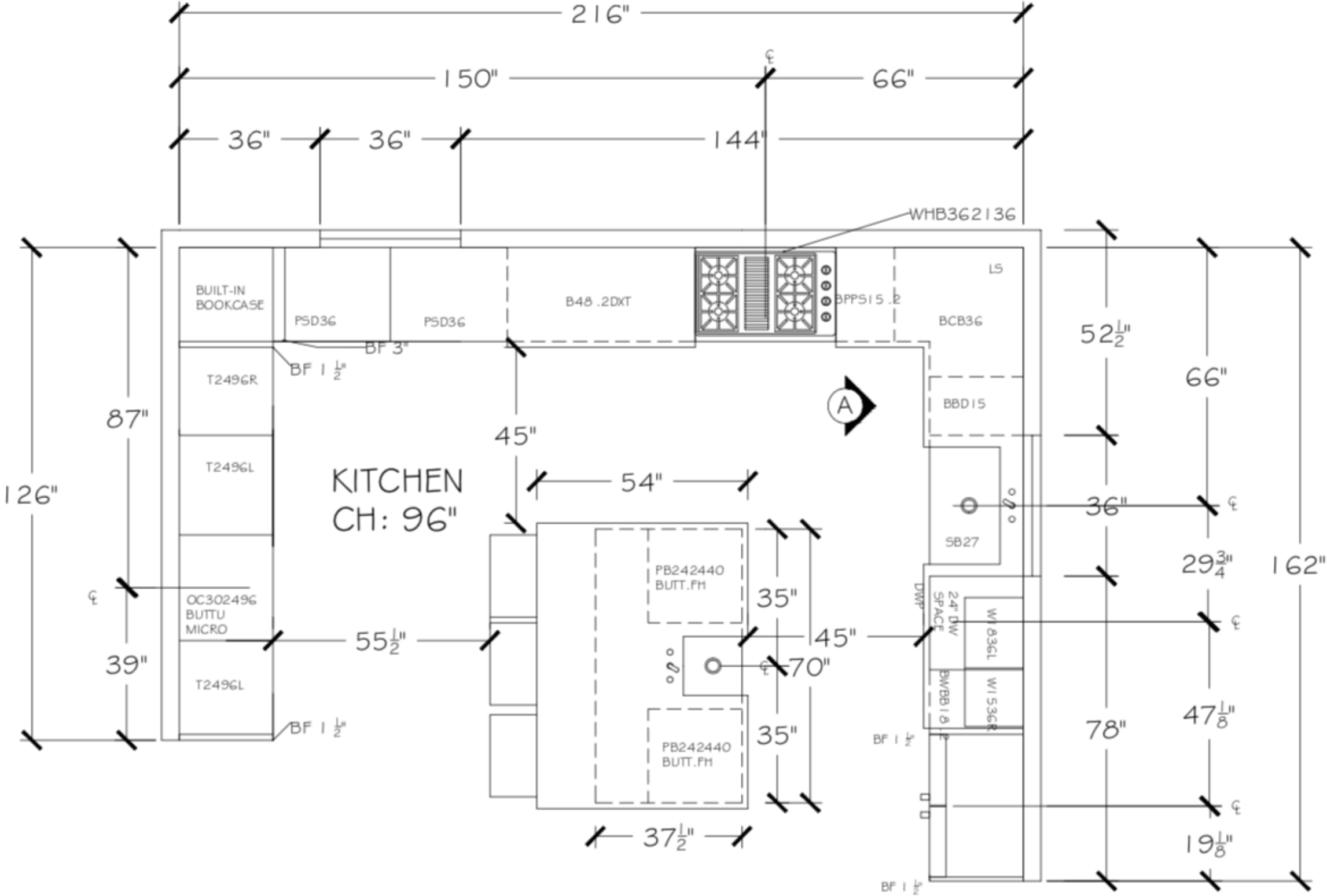
THE BREIF: Our client purchased their first home in Benicia, CA. This bungalow had a dated kitchen and tiny bathroom that didn't fit our client's needs. They're frequent bakers and needed a space where they could work simultaneously. For the bathroom, we pulled in-spiration from Casa Pueblo hotels and wanted to rec-create that complementary color story of blues and or-anges.



LEANNE WEST
DESIGNS



KITCHEN
DESIGN



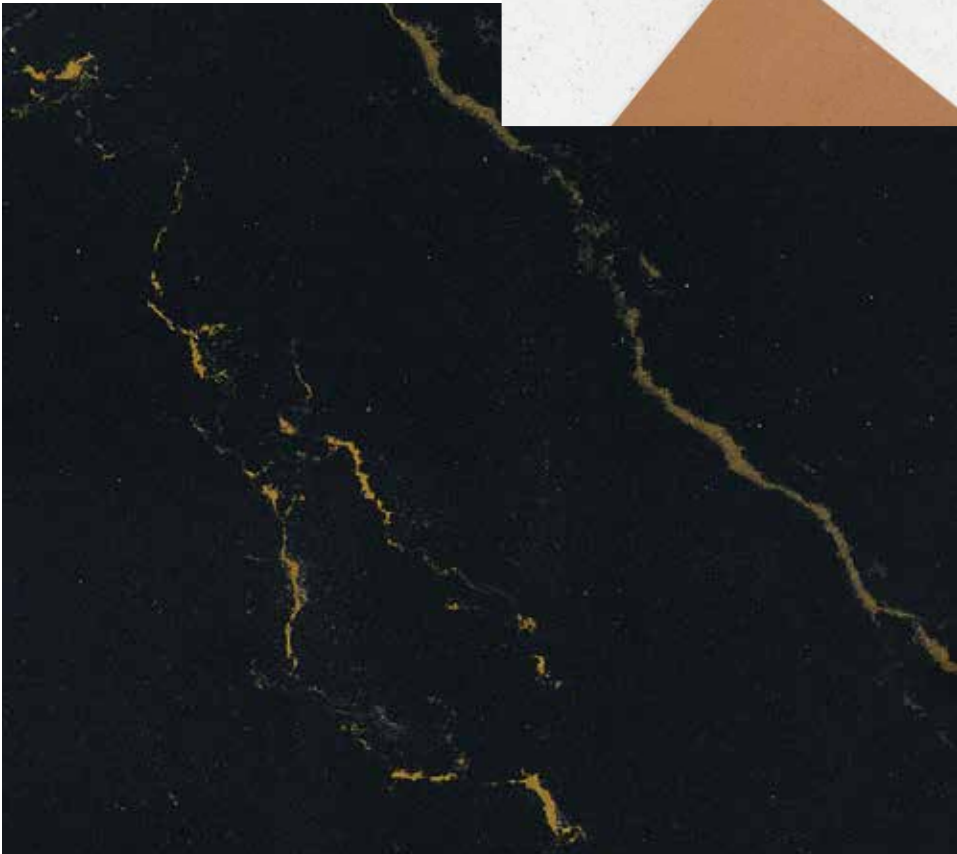
KITCHEN
DESIGN



CUSTOM STRIPE PILLOWS



CUSTOM MULBERRY LEAF
DRAPERY

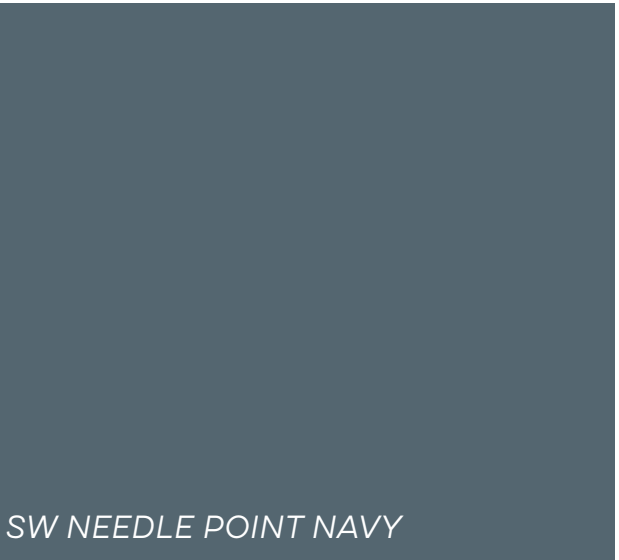
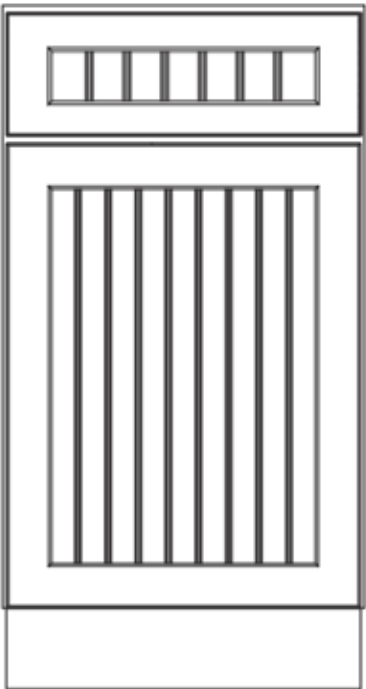


LEANNE WEST
DESIGNS

STONE WHITE TADELAK
PLASTER



A BENICIA BUNGALOW
KITCHEN CONCEPT BOARD



SW NEEDLE POINT NAVY

KITCHEN DESIGN



BATHROOM DESIGN



SILVER WAVE MARBLE COUNTERTOP

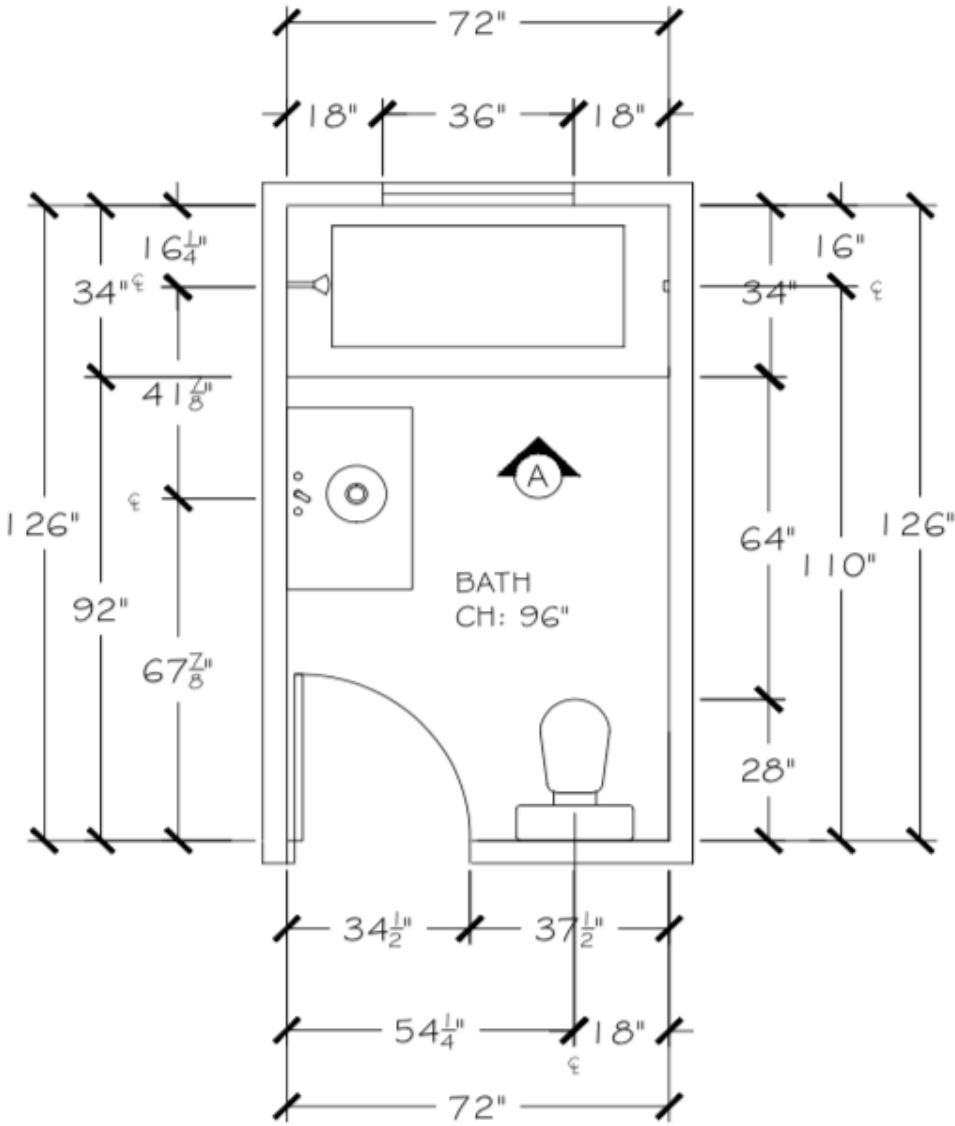


BATHROOM WALL TILE



LEANNE WEST
DESIGNS

A BENICIA BUNGALOW
FLOOR PLAN + CONCEPT BOARD - AUTOCAD



BATHROOM DESIGN



LEANNE WEST
DESIGNS

A BENICIA BUNGALOW
ELEVATION - AUTOCAD + SKETCHUP

03

HOME
STAGING
PERSONAL APARTMENT REMODEL



LEANNE WEST
DESIGNS

B E F O R E



Portland landlords love color. Even though this is a rental, I believe in making our house a home. When we moved into our apartment in Woodlawn neighborhood, almost every wall was baby blue, teal or dark grey. Over the course of two years, I've slowly repainted every room in our apartment.

AFTER



So much better! On the left is our primary bedroom, where I updated the existing dark grey walls with a fresh coat of Benjamin Moore White Sand. The ceiling height in this room is only 7'3". By painting a lighter color, I was able to get more light into the room and create an airiness that was previously weighed down by the dark walls. I traded in the teal and baby blue in our living/dining room for Sherwin Williams Agreeable Gray. The back wall of our dining room was painted Sherwin Williams Urban Bronze to create a pop against the bright colors in our artwork (sourced from a favorite of mine, Urbanite).

CONTACT INFORMATION

LEANNEWEST90@GMAIL.COM

559-916-1562

WESTCREATES.SPACE

INSTAGRAM: @LEANNEWEST

