



ELISE KLEIN

INTERIOR DESIGN PORTFOLIO
HERITAGE SCHOOL OF
INTERIOR DESIGN
2019 - 2021

*Klein
Design*
STUDIOS

ABOUT THE DESIGNER

Elise (she/her) has been designing, renovating, and decorating office spaces and homes since 2008. Projects include:

- Assisting in the selection of office locations, coordinating layout, furnishing, and designing, business space
- Coordinating the space planning and new layout for office space of growing company in Portland's Pearl District
- Designing and coordinating renovations of kitchens, living areas, and bathrooms, including the coordination of multiple contractors
- Selection, purchase, and installation of exterior living space

Kitchen and bath renovations in particular are a passion for Elise. She enjoys taking an old space and making it more functional for modern day living. She takes into account practicality and cost to prepare affordable and approachable designs. Elise's previous experience designing office spaces, renovating homes, and her formal training make her the ideal designer to help you with design solutions to live your most fabulous and functional life.



TABLE OF CONTENTS

FUNDAMENTALS
FALL 2019

5-9

FULL HOME RENOVATION
MINIMALIST HOLLYWOOD GLAM

KITCHEN AND BATH
WINTER 2020

9-13

KITCHEN AND BATH REMODEL
CLASSIC FUNCTION

STAGING
WINTER 2020

19-21

HOME STAGING

REVIT
WINTER 2020

14-18

2 BEDROOM LOFT
INDUSTRIAL WHIMSY

COMMERCIAL
FALL 2020

22-28

BOUTIQUE HOTEL LOBBY RENOVATION
PACIFIC NW ART DECO

MINIMALIST HOLLYWOOD REGENCY FULL HOME RENO

CLIENTS MAIZY AND GARY TENNER



INSPIRATION

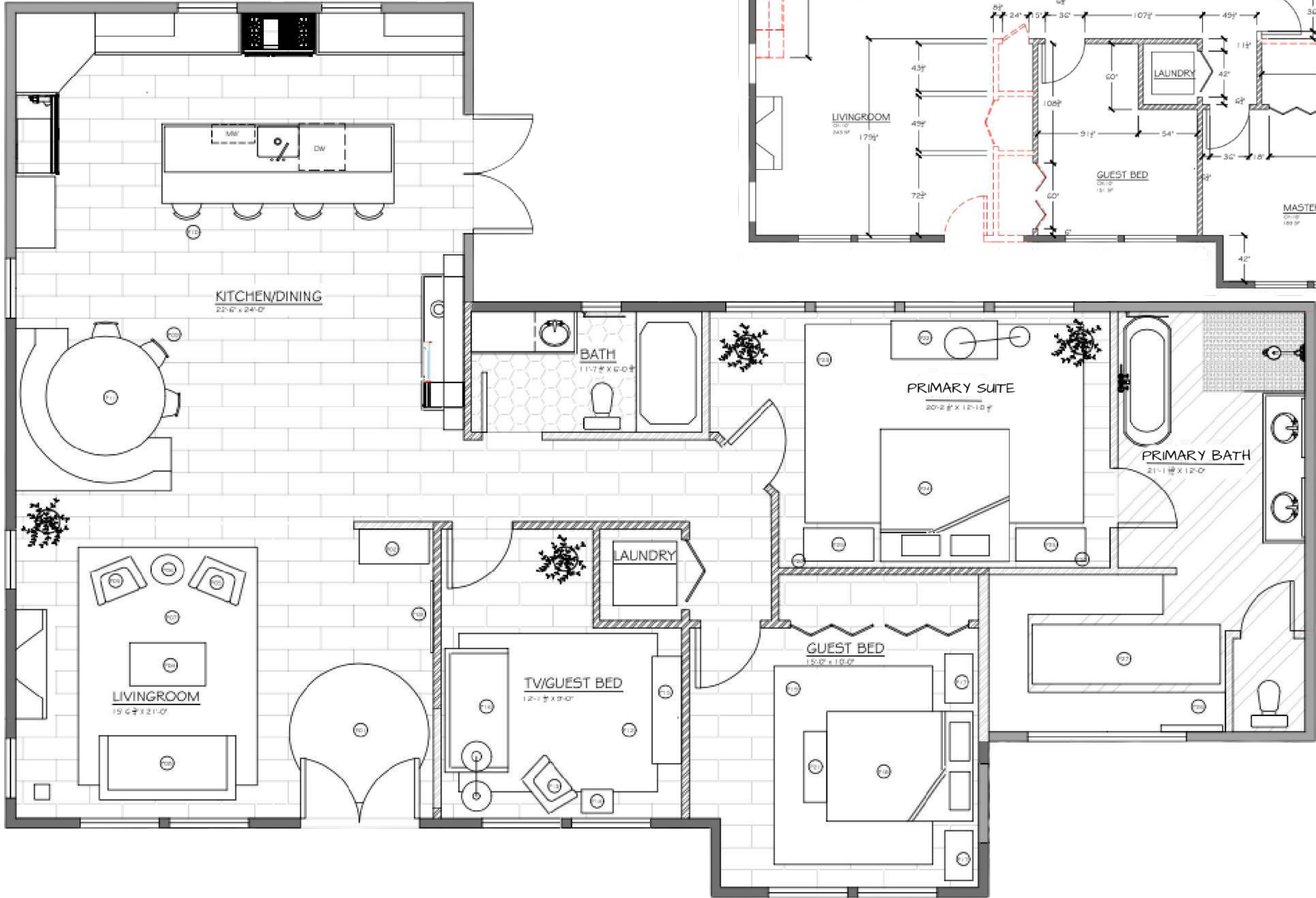
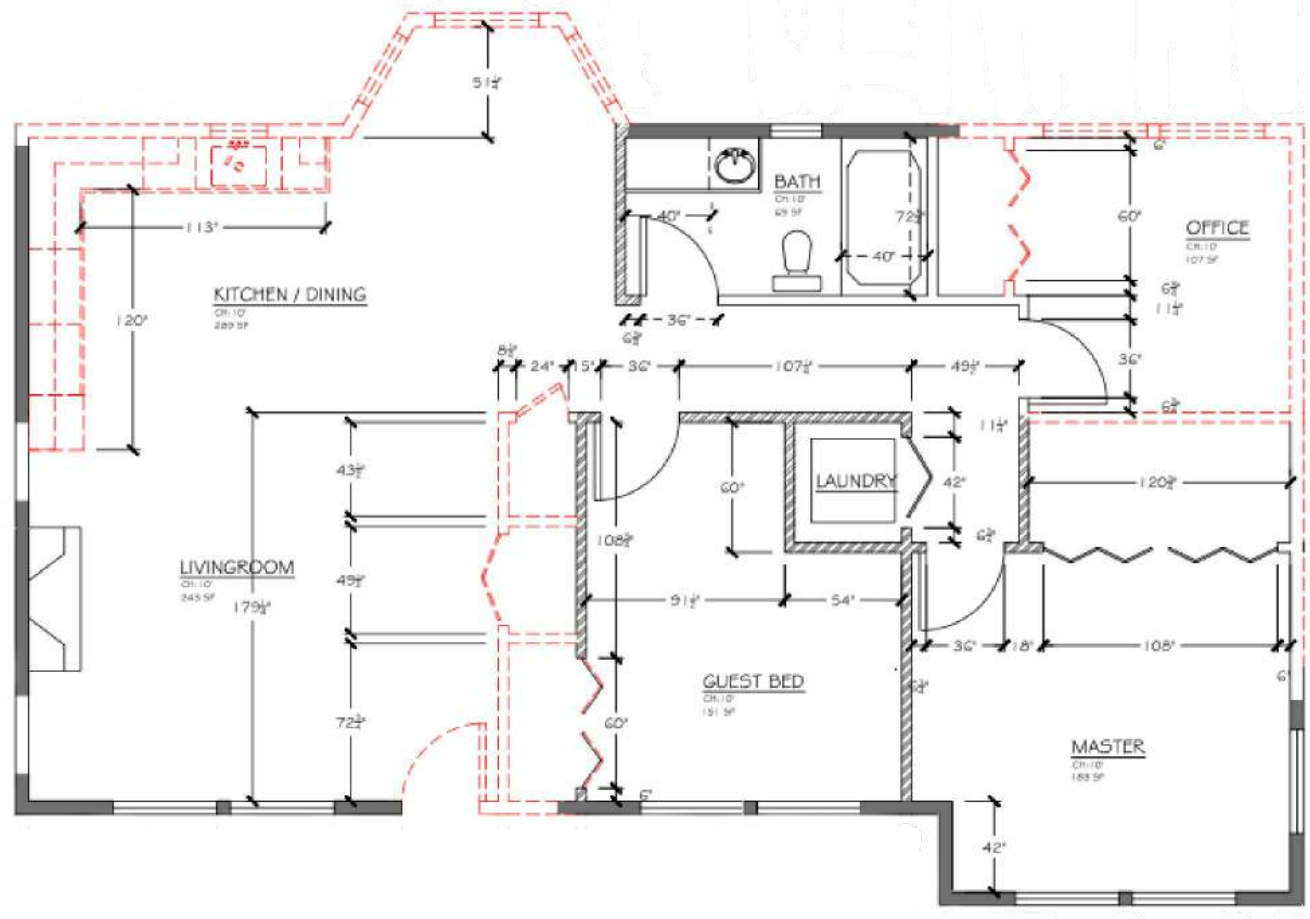
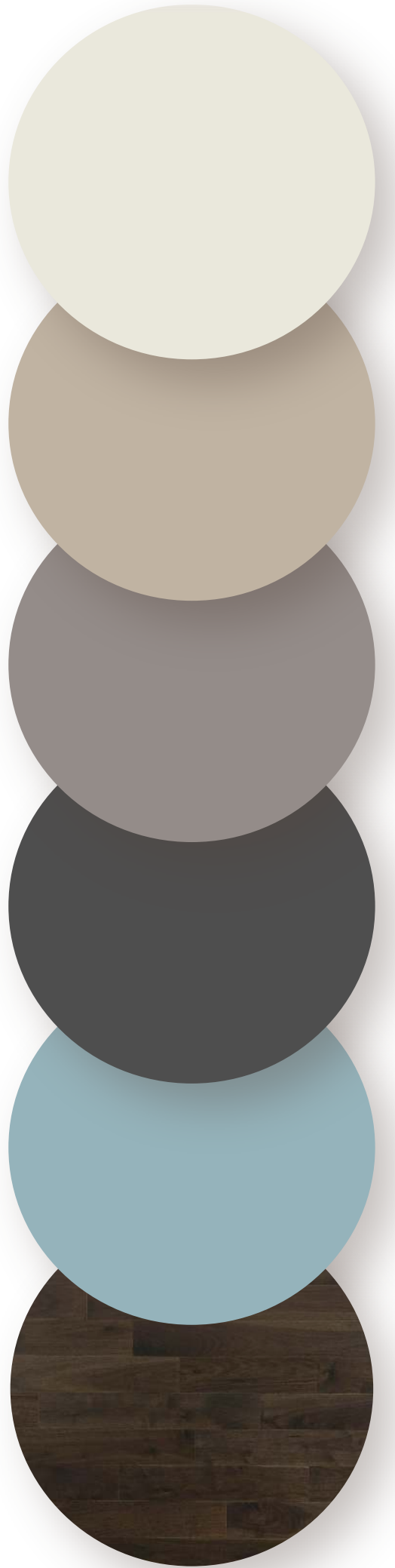
Maizy loves all things Hollywood Regency with downsizing they both want to lean toward Minimalism. The Fiddler by Marc Chagall is their favorite art piece and inspired the colors and geometric shapes used throughout the home.

SCOPE

The current 3 bed / 1 bath home will be fully renovated including the addition of a full Primary Suite and Maizy's dream Kitchen for entertaining.

DEMO AND NEW BUILD PLAN

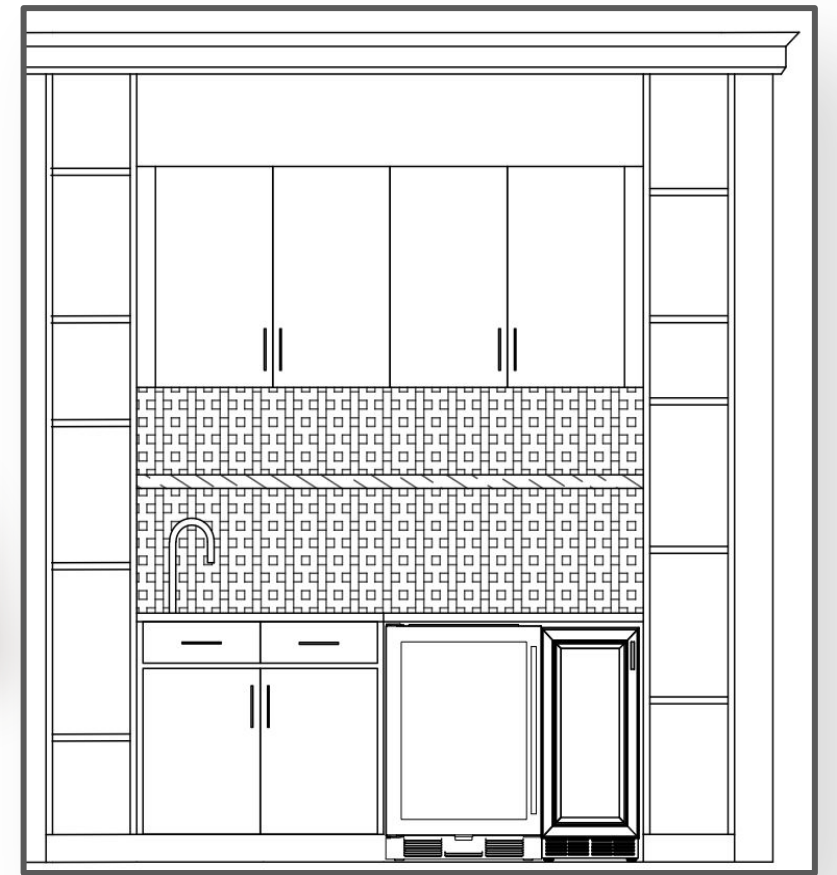
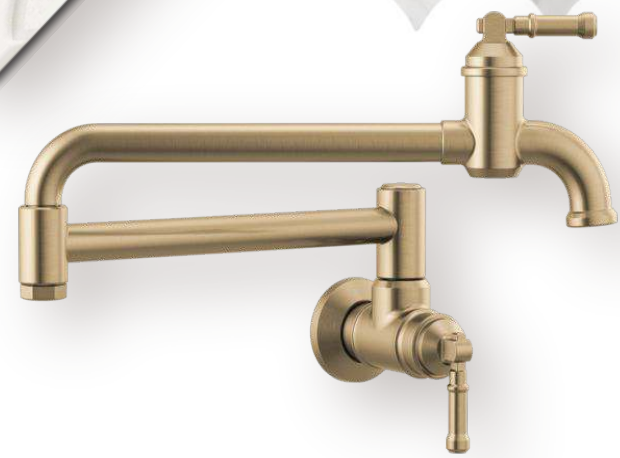
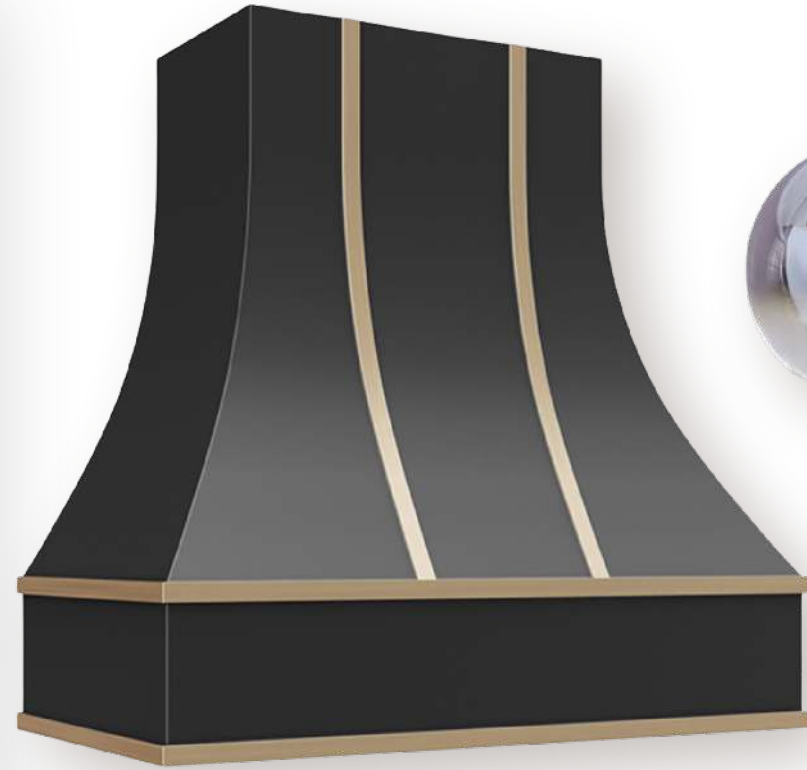
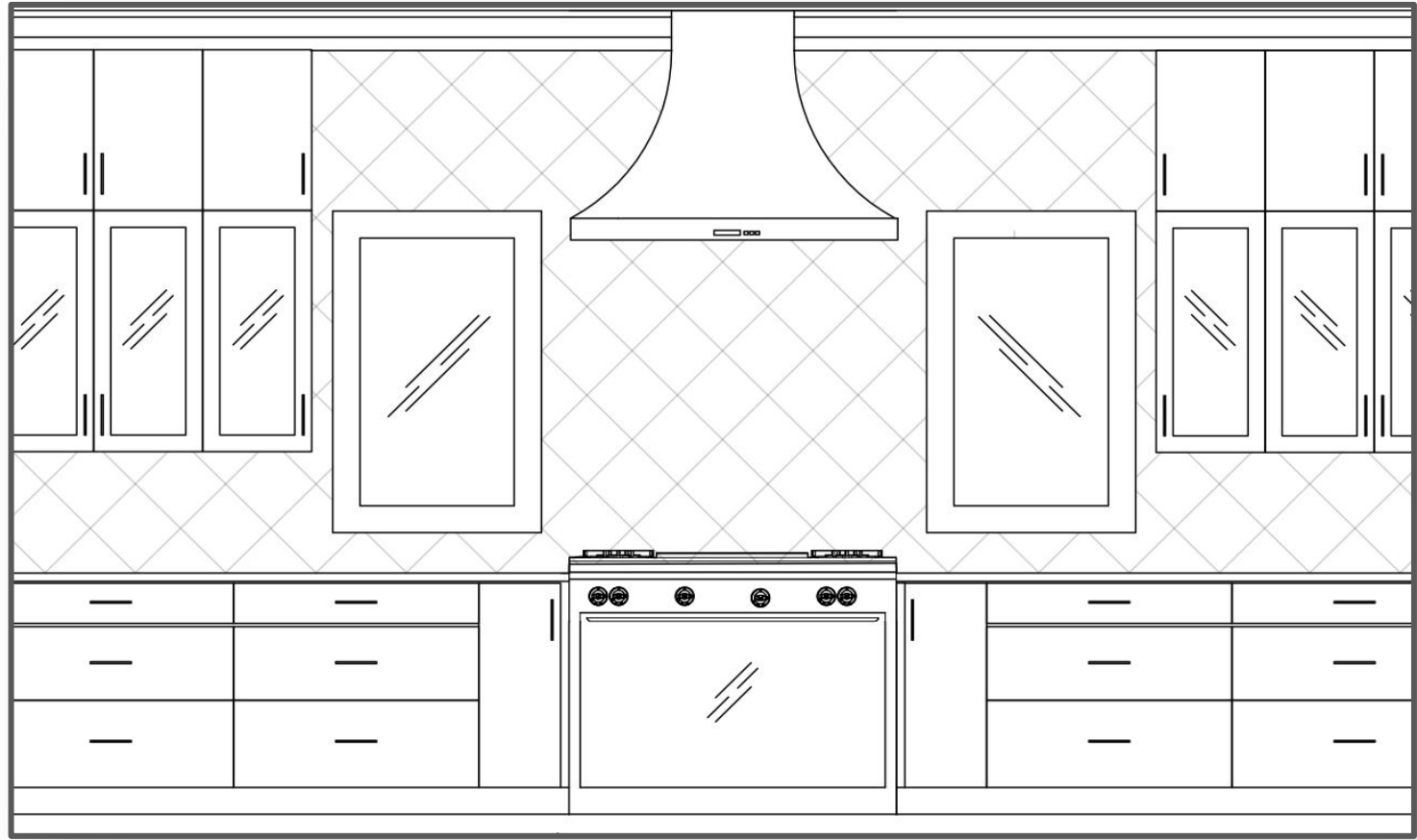
Klein
Design
STUDIOS



LIVING ROOM DESIGN

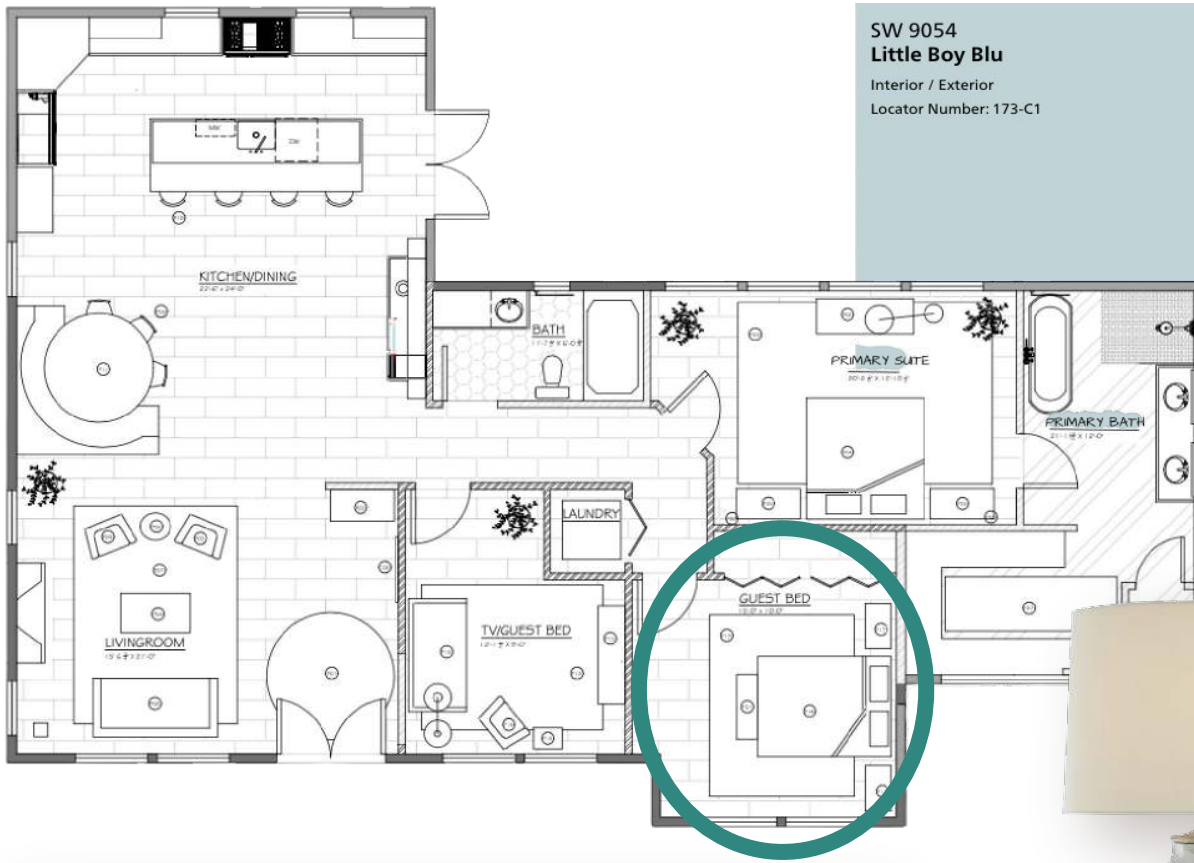


KITCHEN AND BAR



GUEST ROOM

SW 9054
Little Boy Blu
Interior / Exterior
Locator Number: 173-C1



CLASSIC FUNCTIONAL KITCHEN AND BATH

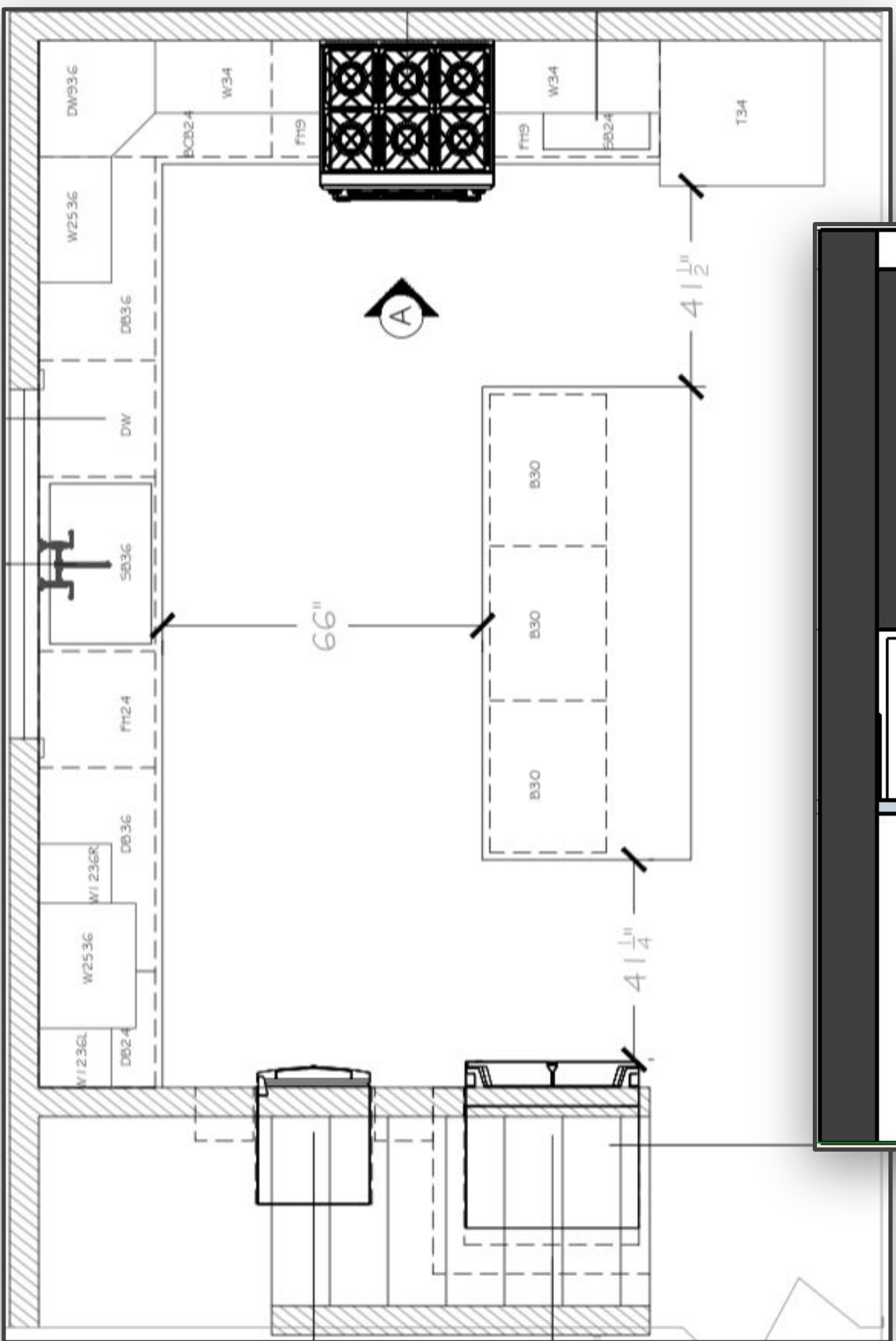
CLIENTS KIRSTE MARTENESS



INSPIRATION Kirste and her young active daughter need a clean and classic space full of Function. They love the California's Coast line and entertaining friends and family.

SCOPE Renovating of existing Kitchen and Secondary Bathroom. Footprints of both rooms maintained, while taking advantage of every inch of space available. For example the refrigerator and wine fridge will be tucked into the empty cavity under the stairs.

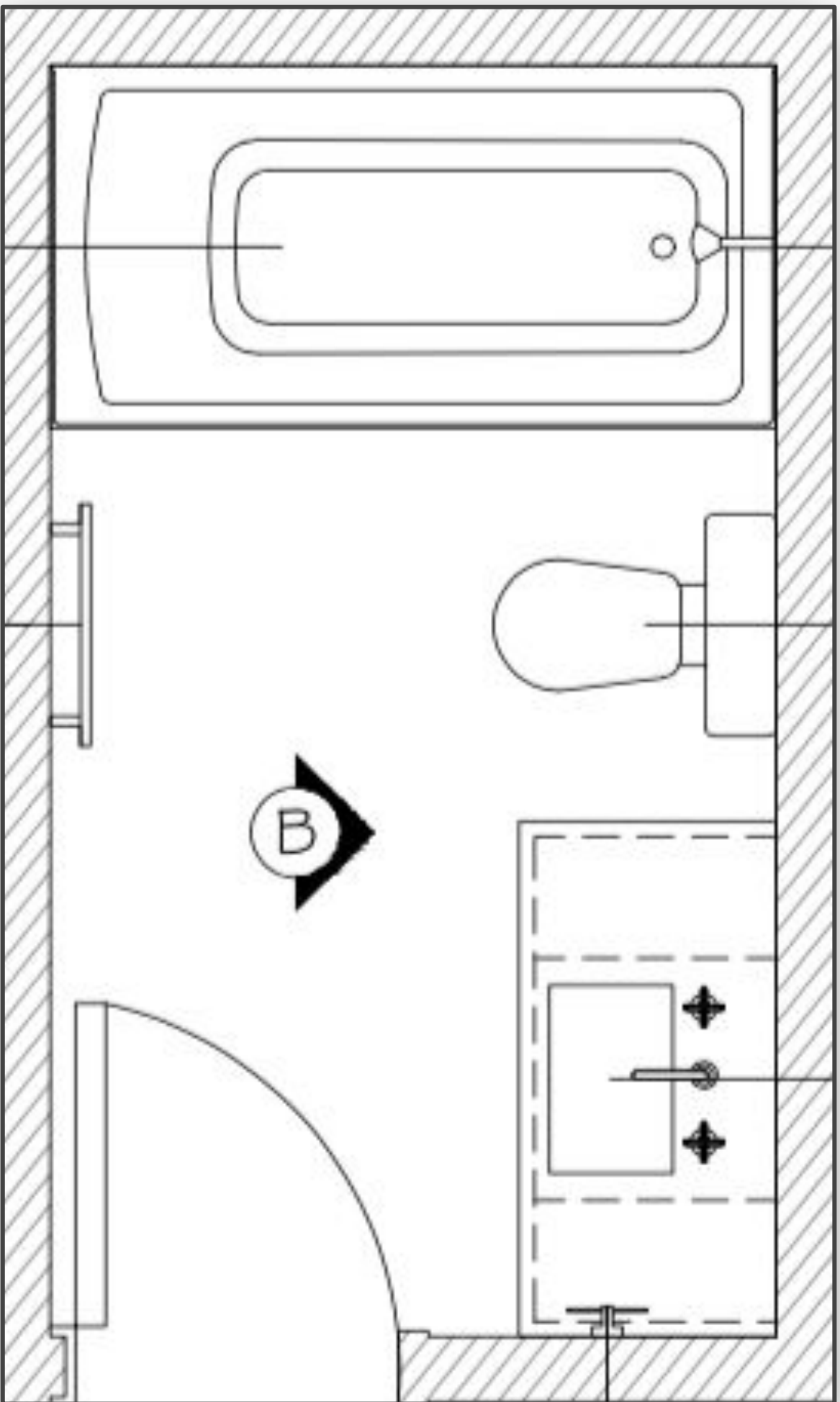
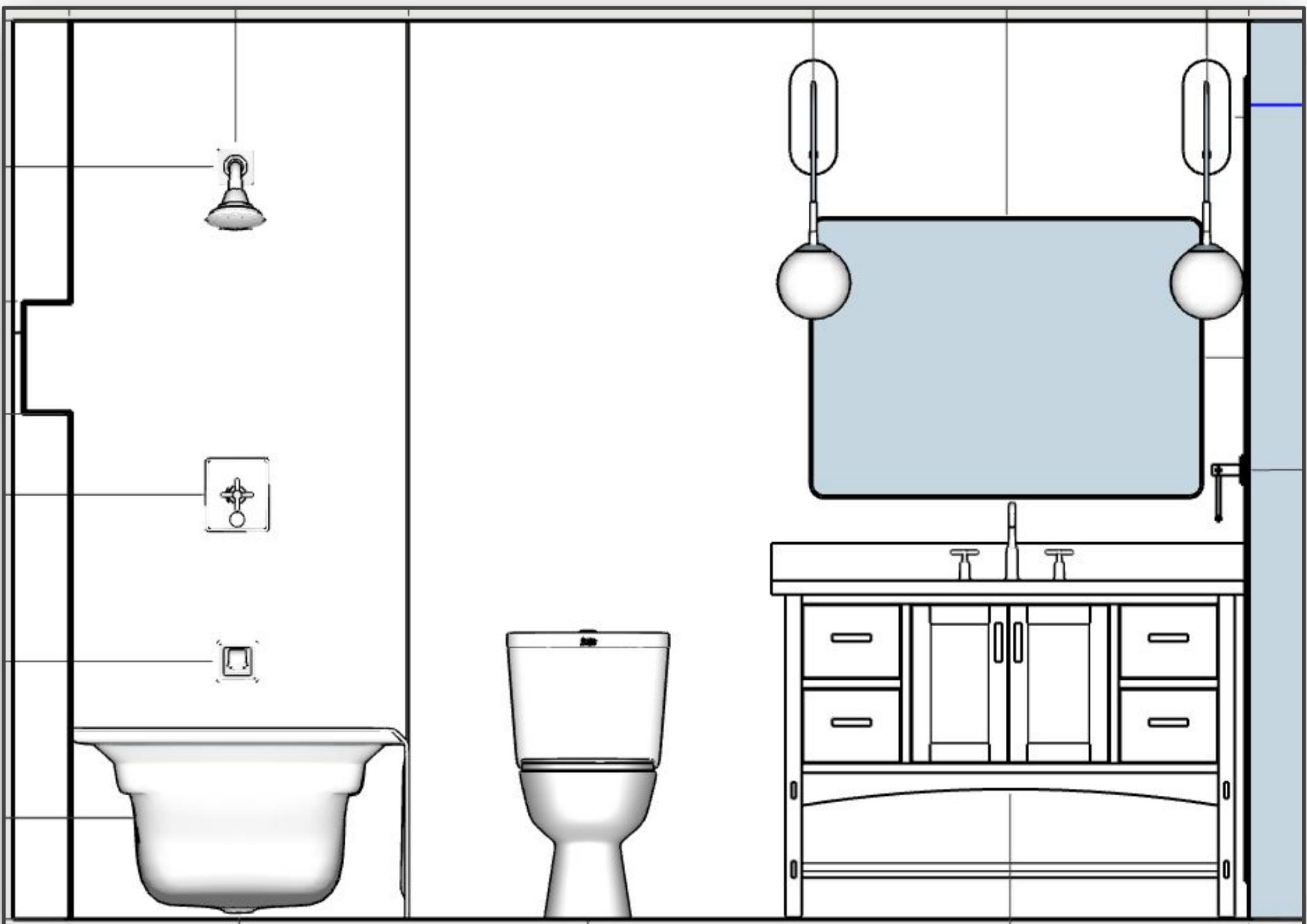
RESIDENTIAL KITCHEN



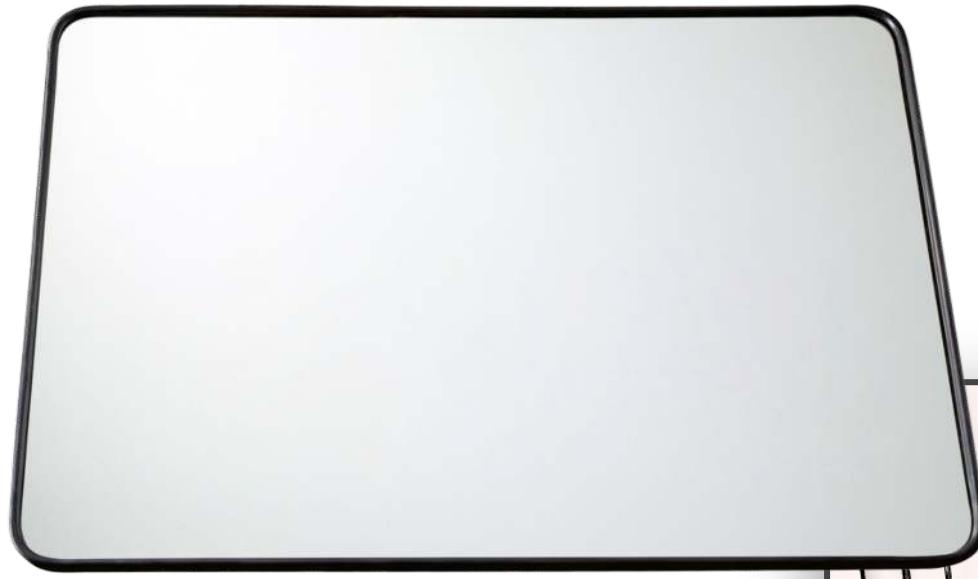
KITCHEN SELECTIONS



RESIDENTIAL BATHROOM



BATHROOM SELECTIONS



INDUSTRIAL NEWLY WED LOFT

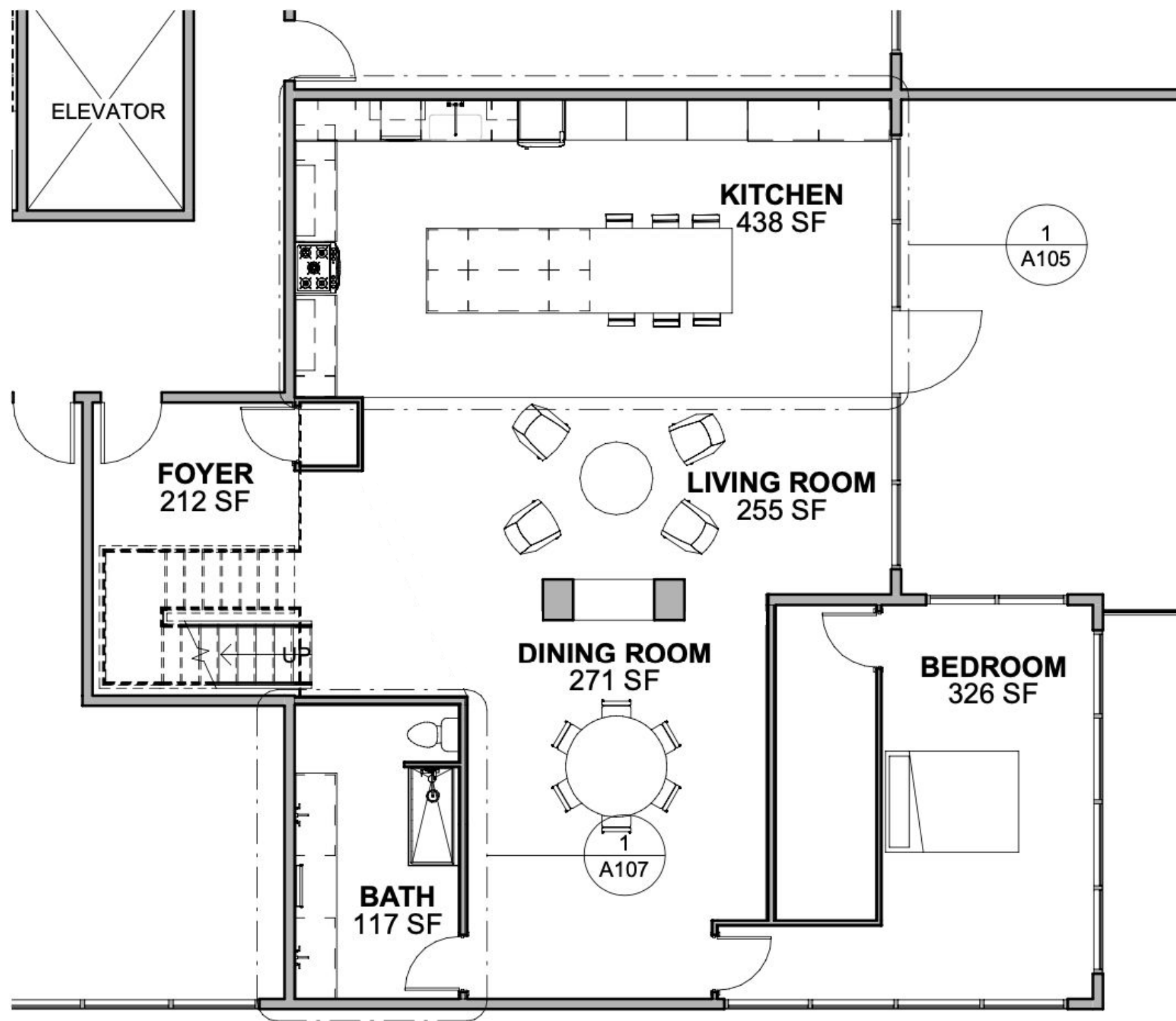
CLIENTS MEREDITH AND DEREK

INSPIRATION Meredith and Derek are two young professionals who have just purchased their first home in The Pearl District. They want to stay true to the Industrial style of the building.

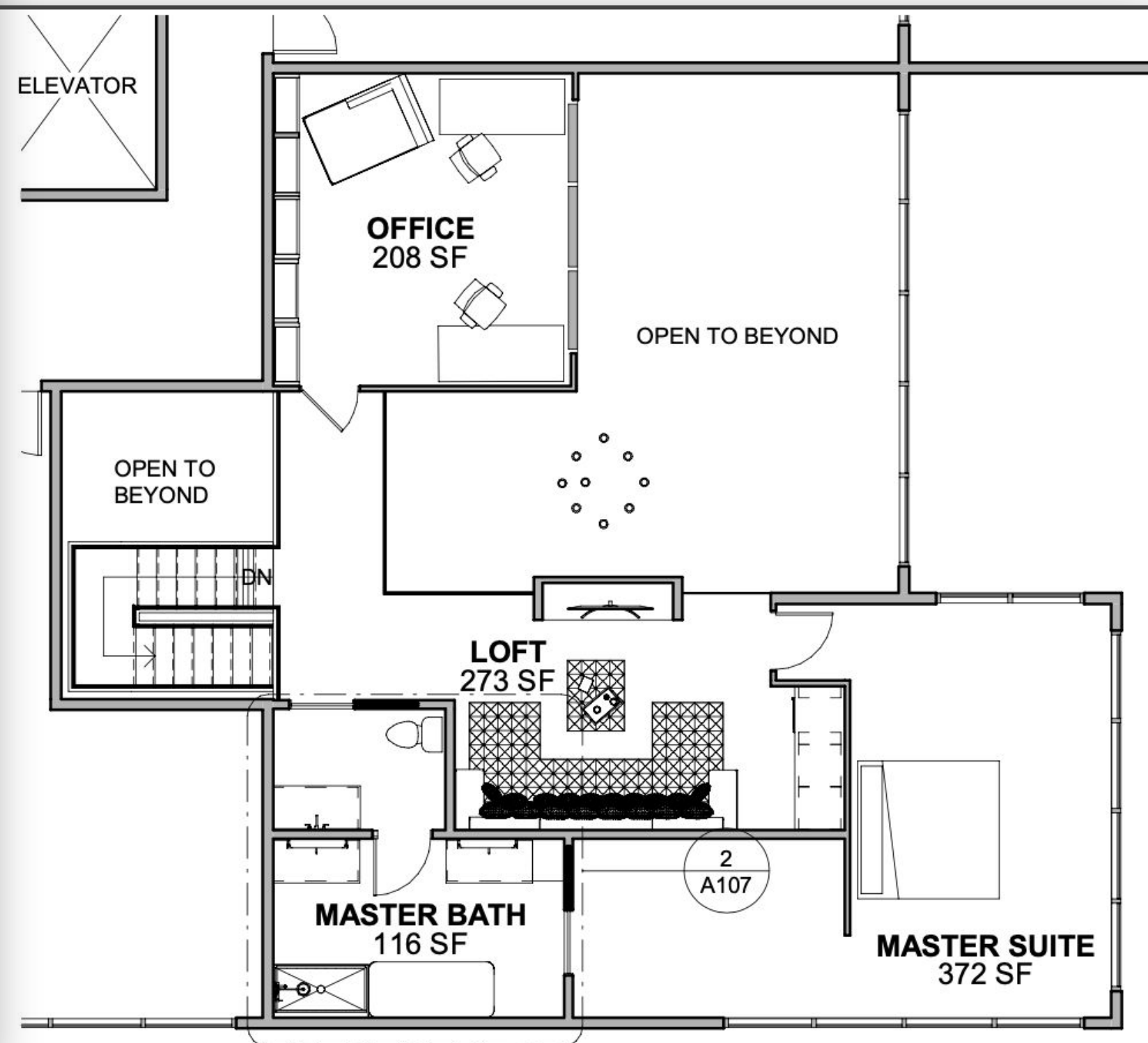
SCOPE The loft is a 2 story blank slate in a new building. They want an open plan with large kitchen and room to entertain. Our plan is to take advantage of the high ceilings and build in a second level with Primary Suite and an office.



FLOOR PLANS

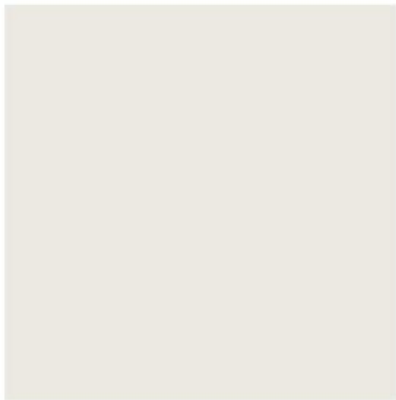


1 LEVEL 05 FLOOR PLAN
1/8" = 1'-0"



2 LEVEL 06 FLOOR PLAN
1/8" = 1'-0"

RENDERING AND FINISHES



RESIDENTIAL KITCHEN



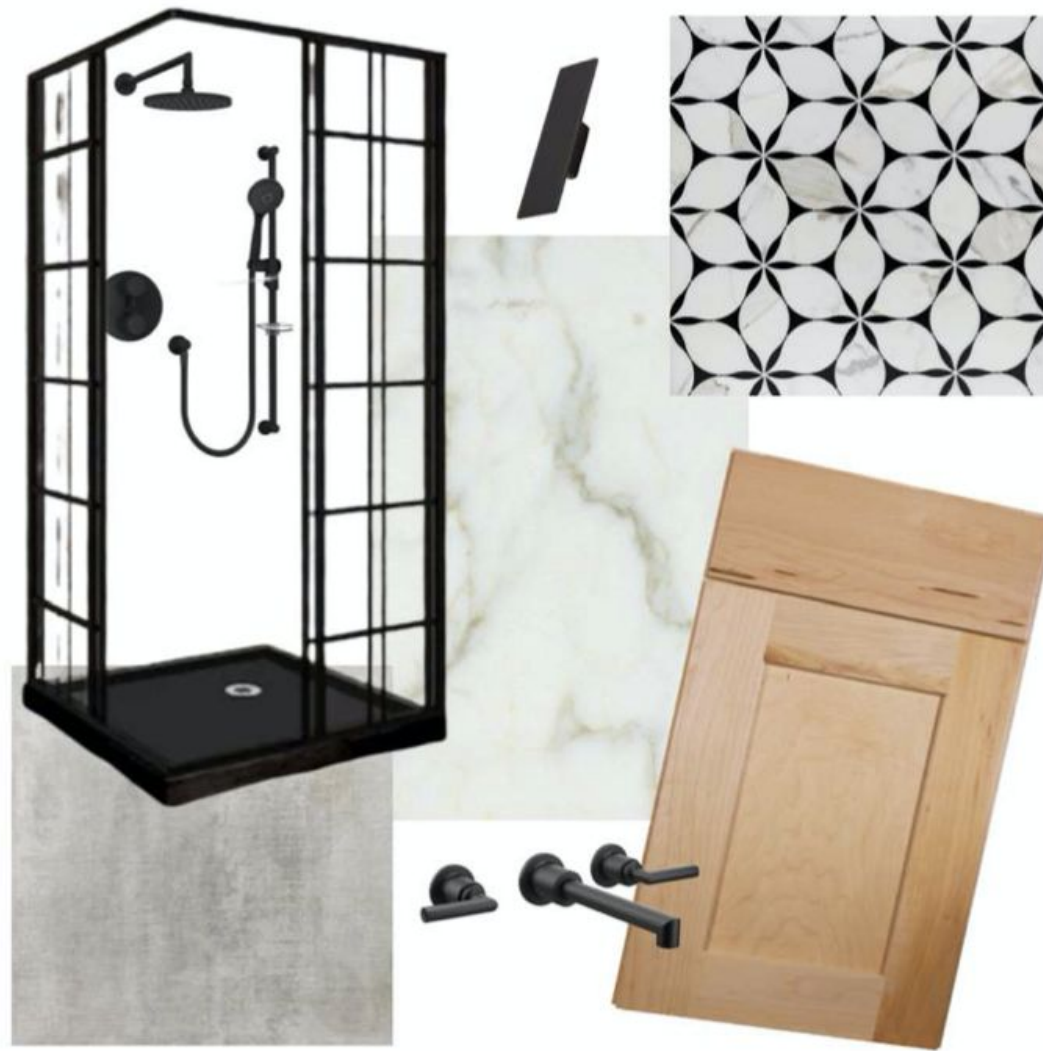
① KITCHEN ELEVATION
1/2" = 1'-0"



RESIDENTIAL BATHROOM



1 LOWER BATHROOM ELEVATION
1/2" = 1'-0"



2 MASTER BATHROOM ELEVATION
1/2" = 1'-0"

TITLE: IN PROGRESS

CLIENT: LOCAL REALTOR



INSPIRATION

Home is in a desirable family friendly neighborhood. We have been hired to stage this home for mass appeal and maximum sale price. A neutral pallet with blue and green accents with selections in a mix of contemporary and modern pieces.

SCOPE

The home has an open concept on the main level with 3 bedrooms and 3 baths. Including a large primary suite with 2 walk in closets.

LOWER LEVEL



LIVING ROOM STAGING

UPPER LEVEL



PRIMARY BEDROOM STAGING

PACIFIC NW ART DECO BOUTIQUE HOTEL LOBBY

CLIENTS JO AND ALEX CARR



INSPIRATION Art Deco Buildings and the Forests around Vancouver provided the inspiration for the remodel of this Boutique Hotel.

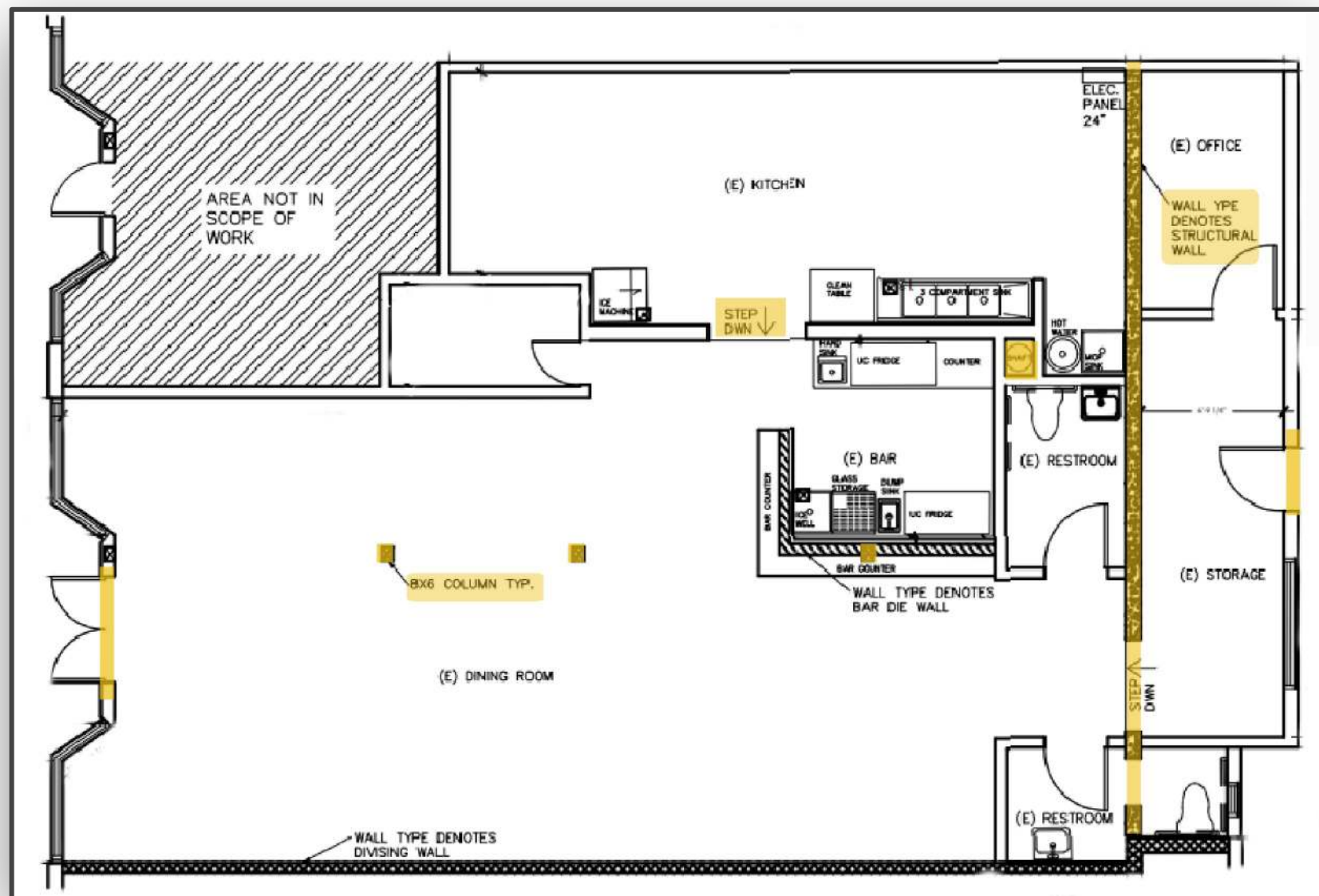
SCOPE New owners need to bring this established hotel up to code and into the 21st Century. An arched entryway, faux skylights and fireplace are added for architectural interest and moving the bathrooms to the rear of the building.

ROMANCE AND GLAMOR OF
ART DECO ENTWINED WITH
THE WARMTH AND NATURAL
ELEMENTS FROM THE PACIFIC
NORTHWEST

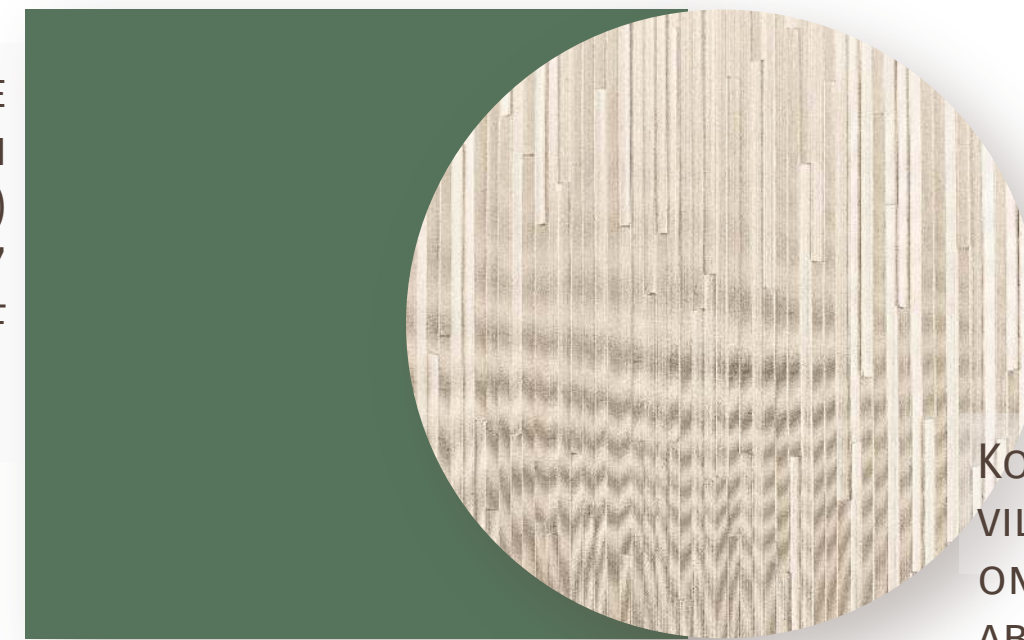


FLOORPLANS AND FINISHES

Klein
Design
STUDIOS

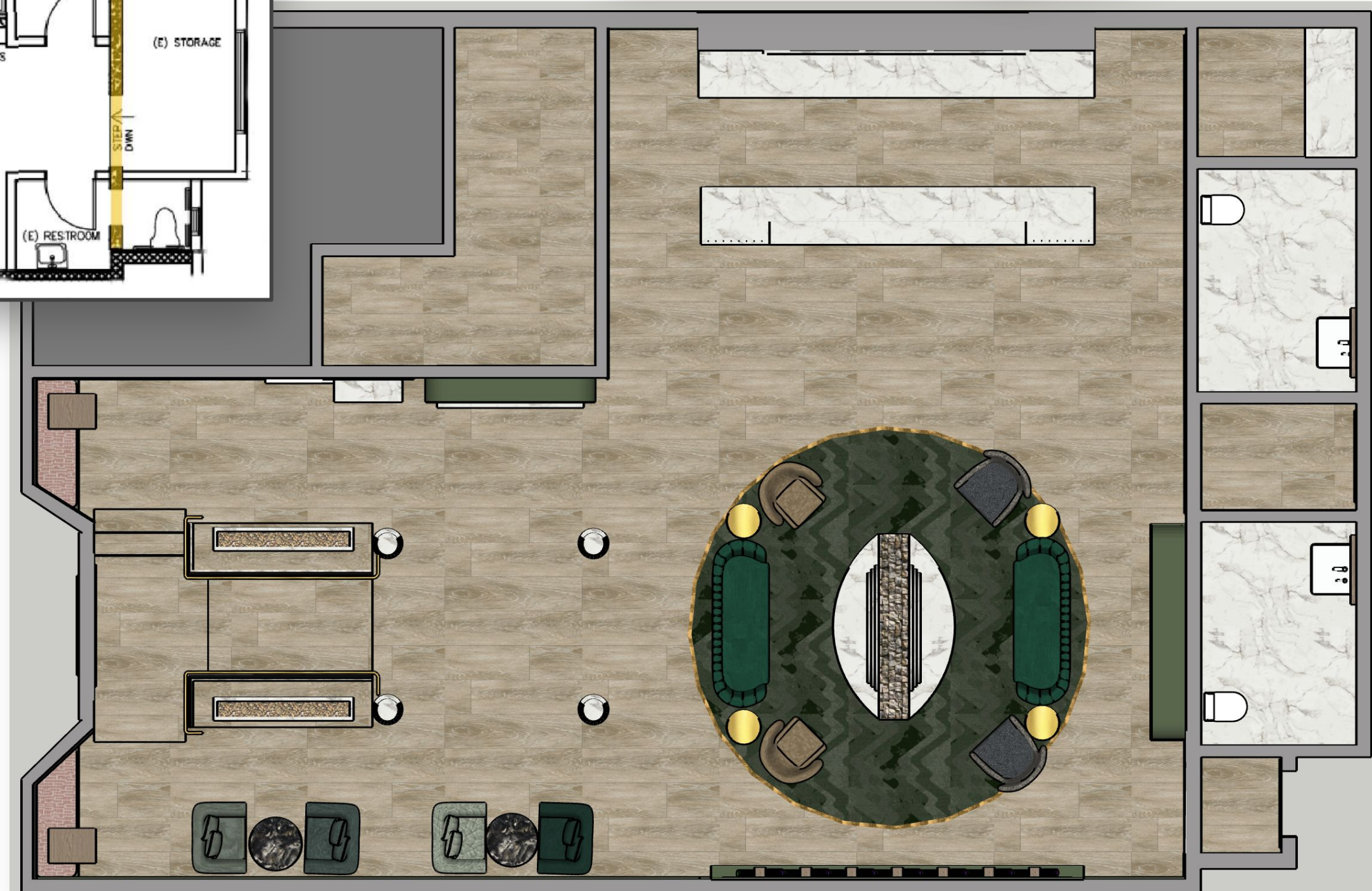


PANOLAM | PIONITE
THRUCOLOR HPL IN
FRESH CUT GRASS (SM)
ON ALL WALLS UP TO 7'
AFF



SIGNATURE | LVT IN DRIFTWOOD FOR MAIN FLOORING

SIGNATURE SUNSCAPES IN CUSTOM COLORWAY AROUND FIREPLACE





ARCHED ENTRY

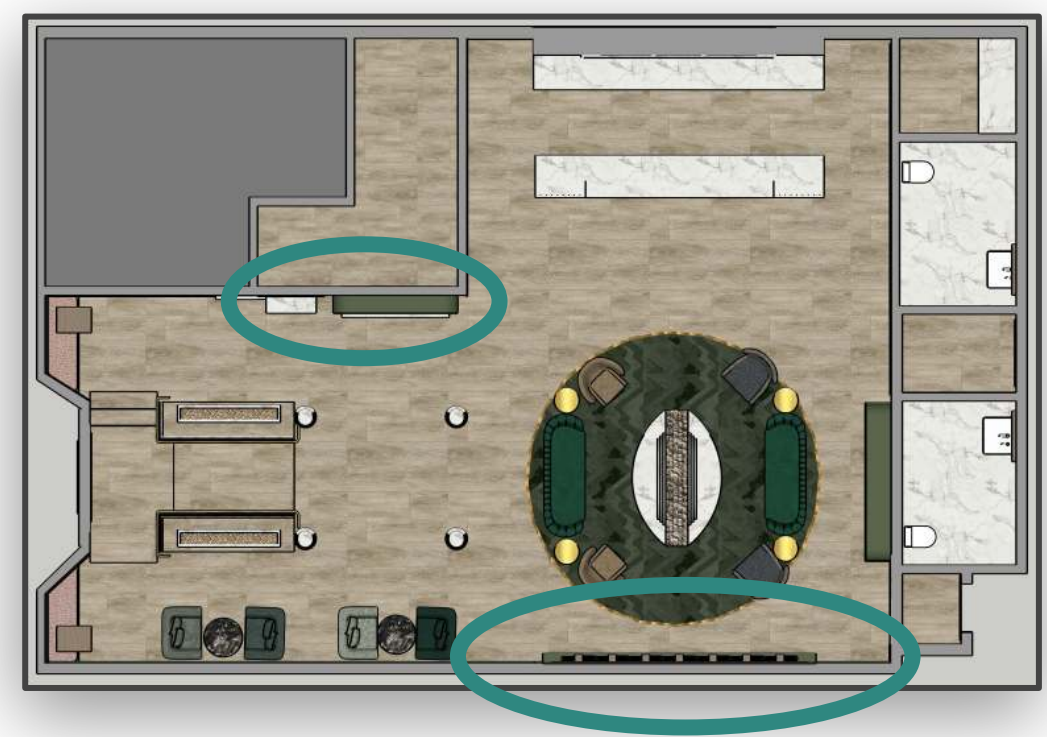
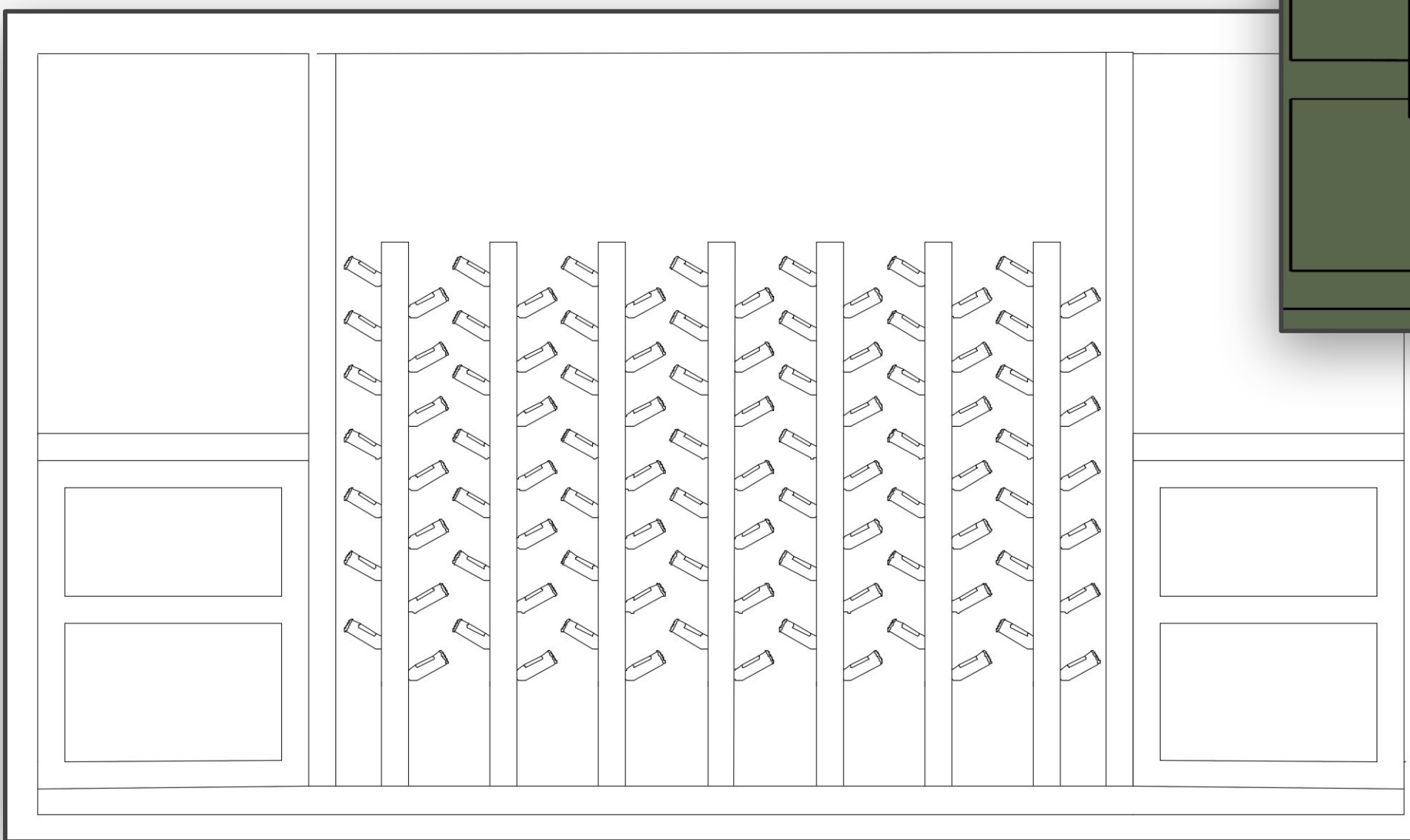
RECEPTION DESK



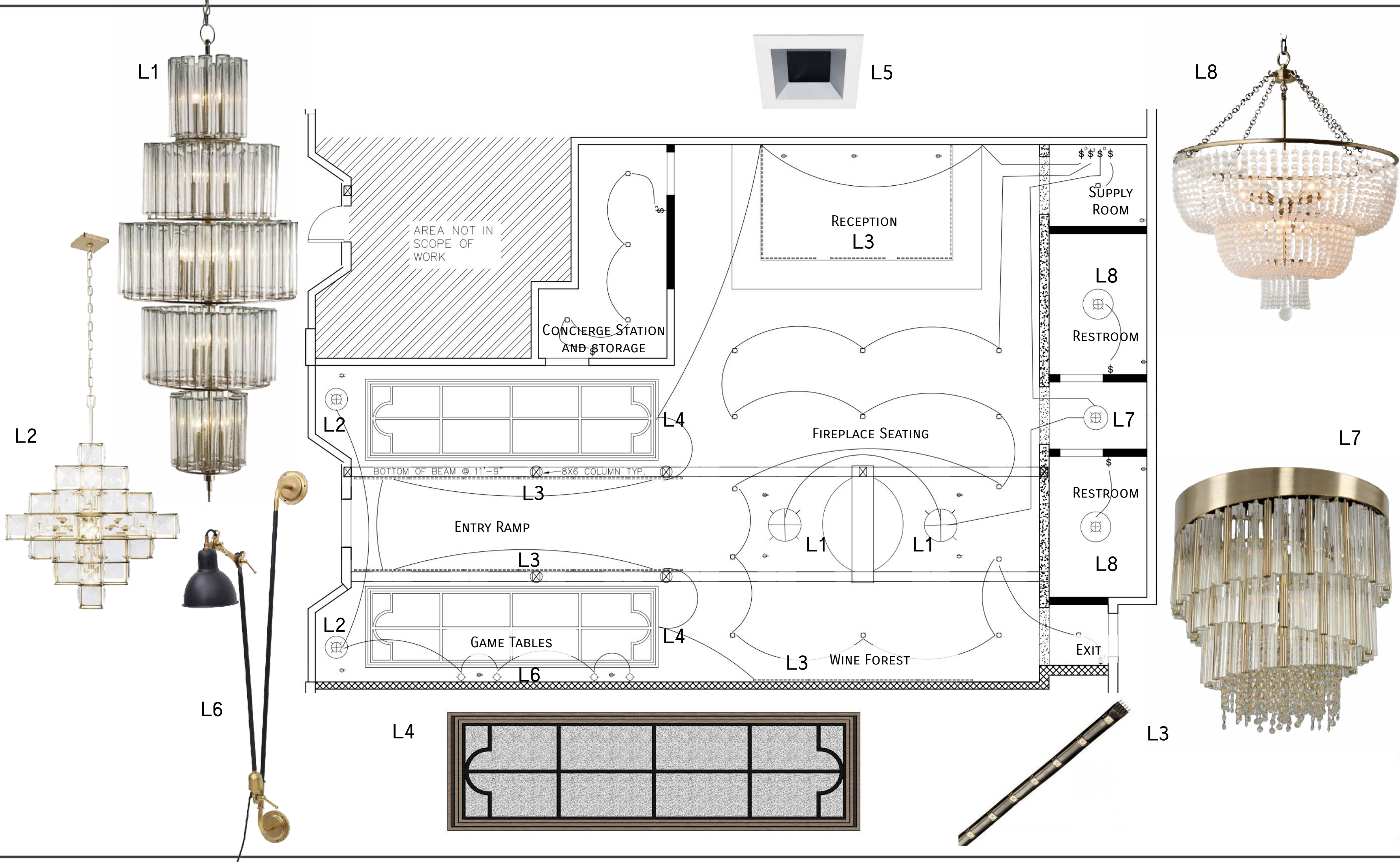
BUFFET NICHE



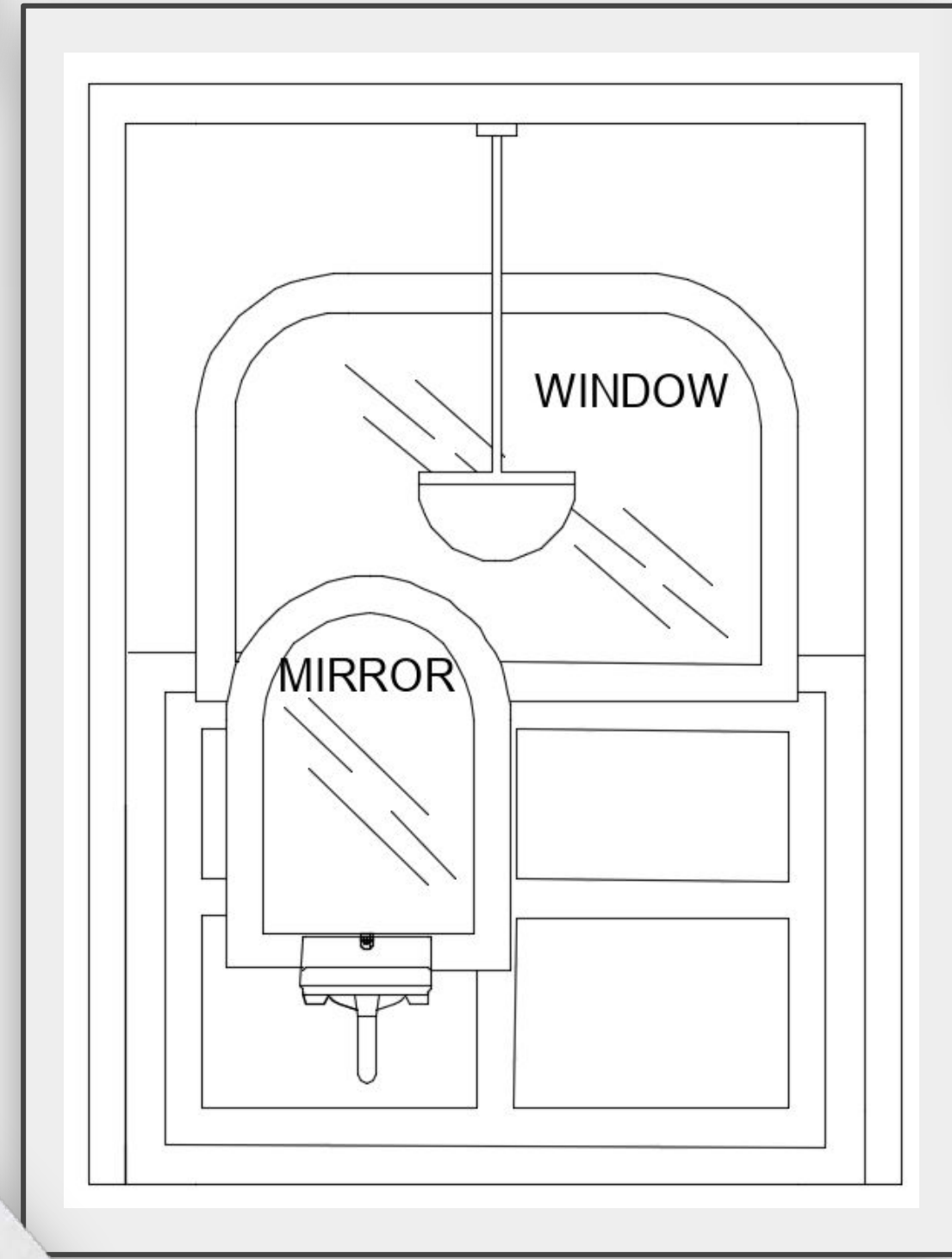
WINE FOREST



DECORATIVE LIGHTING PLAN



COMMERCIAL BATHROOM





ELISE KLEIN | KLEIN DESIGN STUDIOS

ELISE@KLEINDESIGNSTUDIOS.COM | 971.221.3428

📷 KLEINDESIGNSTUDIOS

*Klein
Design*
STUDIOS